



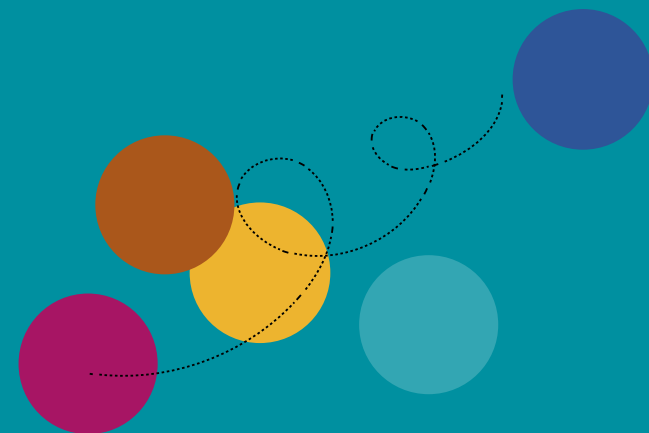
**NORWICH**  
City Council

A fair and thriving city, full of ambition

# THE STATE OF NORWICH 2024

PEOPLE, PLACE, ECONOMY, WELLBEING

*All data is accurate as of December 2024*



# THE STATE OF NORWICH

OVERVIEW  
OF THE  
STATE OF  
NORWICH



*For further information, please select relevant box*



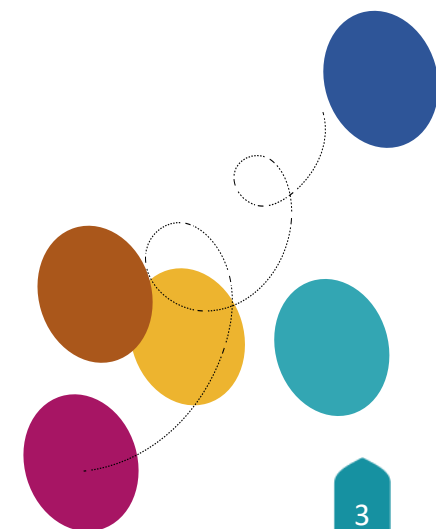
# OVERVIEW

The State of Norwich uses key datasets and metrics that can be compared with other places and observed over time to help the council, and its partners, stakeholders and residents develop a shared, long-term view of the city.

The purpose of this evidence base is to create a framework to monitor collective progress towards the council's vision and the shared priorities set out in its community-led plan 'We are Norwich'. Additionally, the datasets and metrics monitor contextual trends and inform decision-making on shared strategic issues, both within the council and across its key partnerships.

The State of Norwich is organised around four key themes, which are:

- people
- place
- economy
- wellbeing



## KEY THEMES





HOME

# 1. PEOPLE

## INTRODUCTION

The people theme seeks to understand data relating to the following areas:

- **Population and characteristics**, which considers the size, growth and diversity of the Norwich population.
- **Deprivation and poverty**, which considers poverty in children in absolute low-income families.
- **Educational attainment** in Norwich in Level 1- Level 4 qualifications.
- **Workforce travel**, which considers the methods used to travel to work in Norwich.

## SUMMARY

The analysis shows that Norwich has experienced significant population growth over the last decade and is the most densely populated district in Norfolk with **3,731** residents per kilometre.

Norwich has the most 15–64-year-olds of all neighbouring districts and of all the districts, Norwich has seen the smallest percentage change in population aged 65 years and older between 2011-2023.

Ethnic diversity is low in Norwich, with the proportion of people from an ethnic group other than White is **12.9%**.

Norwich, as with any city, faces some challenges including significant and entrenched inequality and deprivation. The latest data published by the [End Child Poverty Coalition](#) discovered that one in three children across Norfolk are living in poverty households. In Norwich itself, **35.3%** of children are living in households below the poverty line.

### Overview

Population by Religion

Population by Ethnic Group

Household Composition

Children Living in Low-Income Families

Qualifications

Method Used to Travel to Work

Population by Age



KEY THEMES

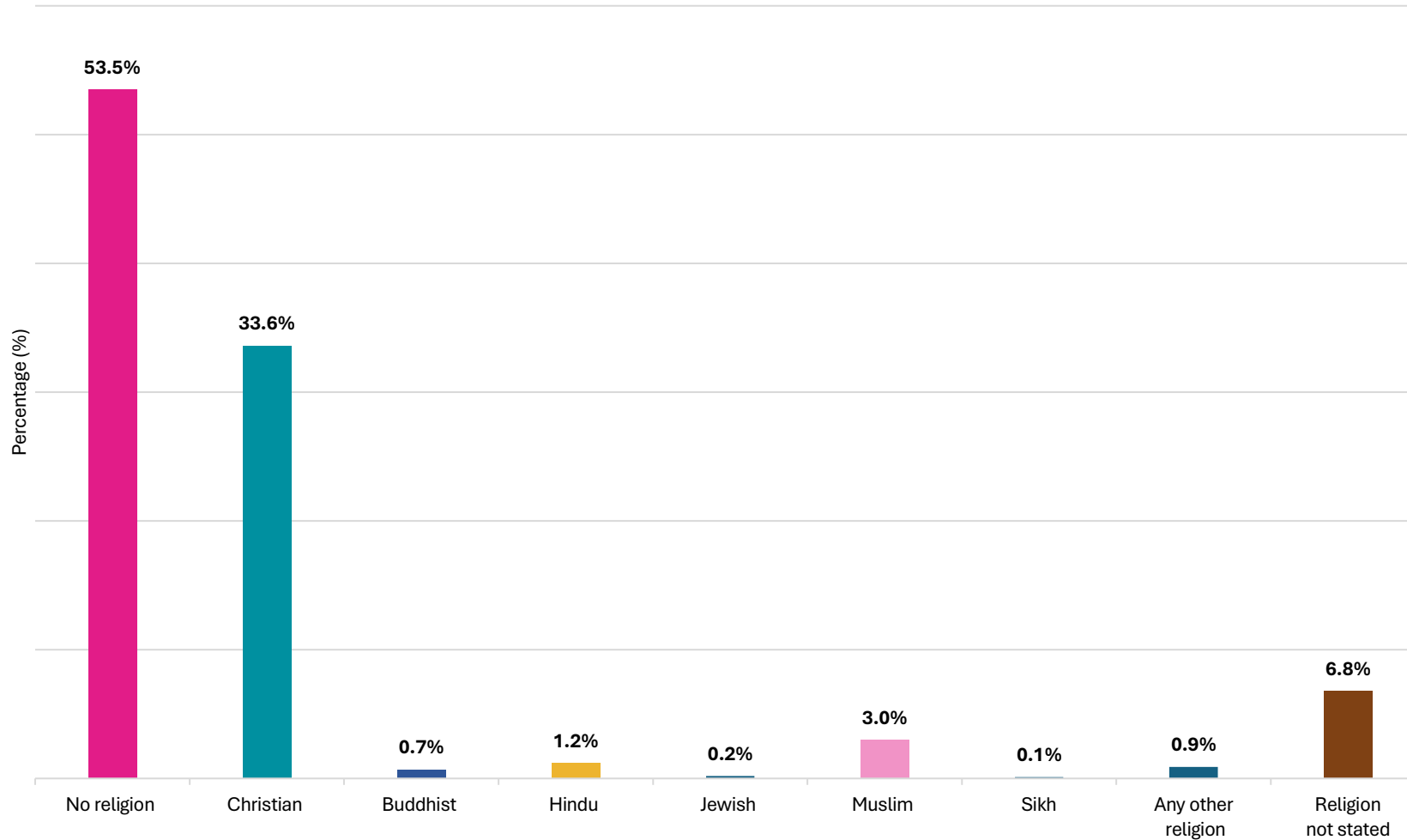




HOME

# 1. PEOPLE

## POPULATION BY RELIGION, 2021



- **53.5%** of people in Norwich state that they have 'No Religion' which means that the city is the second least religious in England.
- The number of people in Norwich who said they were Christian dropped from **44.9% in 2011** to **33.6% in 2021**.

- Overview
- Population by Religion**
- Population by Ethnic Group
- Household Composition
- Children Living in Low-Income Families
- Qualifications
- Method Used to Travel to Work
- Population by Age



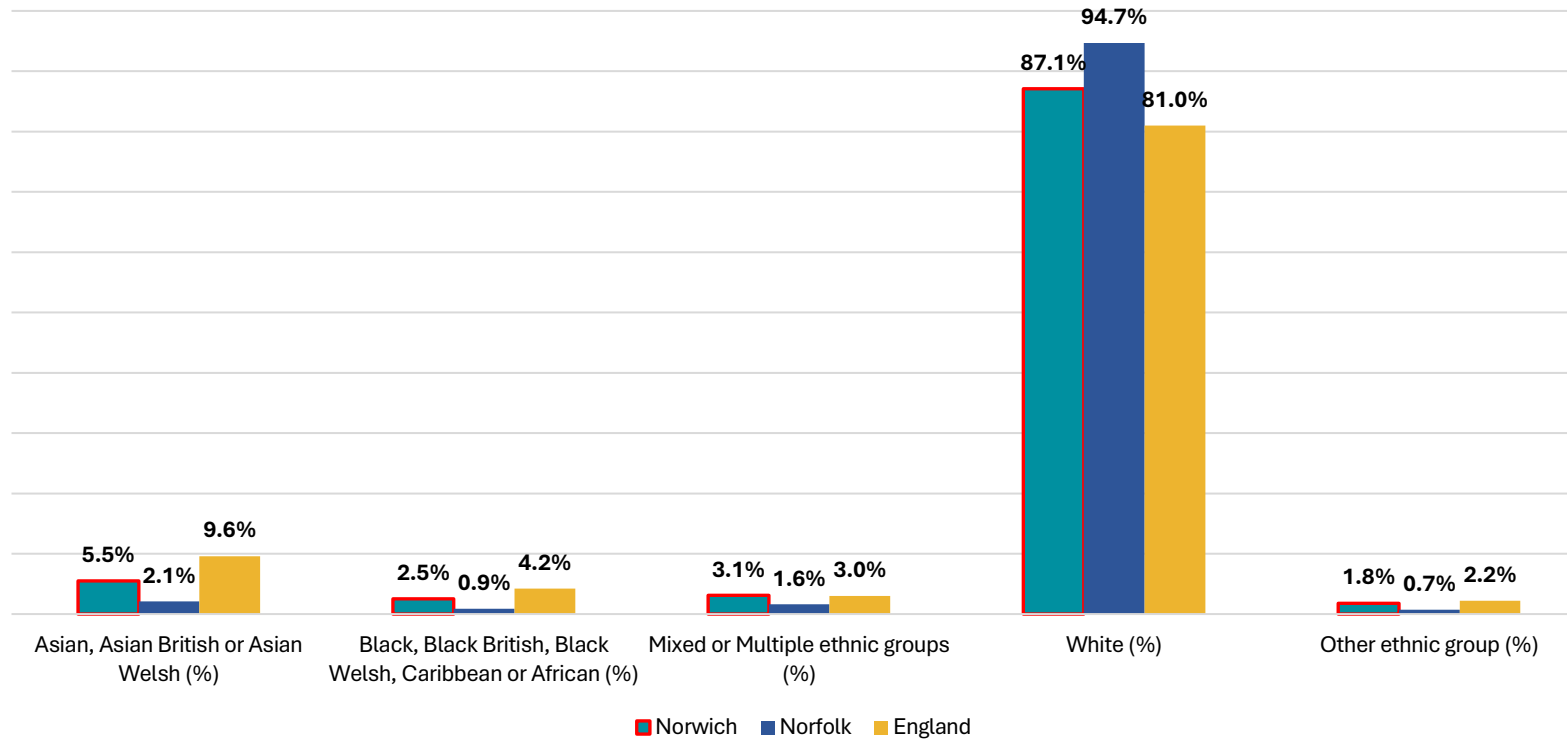
Data Source: [Religion, England and Wales - Office for National Statistics](#)

KEY THEMES



# 1. PEOPLE

## BROAD ETHNIC GROUPS, 2021



- In 2021, **5.5%** of Norwich residents identified as ‘Asian, Asian British or Asian Welsh’, which constitutes a 4.4% increase since 2011. The 1.1 percentage-point change was the largest increase among high-level ethnic groups in the area.
- **87.1%** of people in Norwich identified as ‘White’ (compared with **90.8%** in 2011).

Overview

Population by Religion

Population by Ethnic Group

Household Composition

Children Living in Low-Income Families

Qualifications

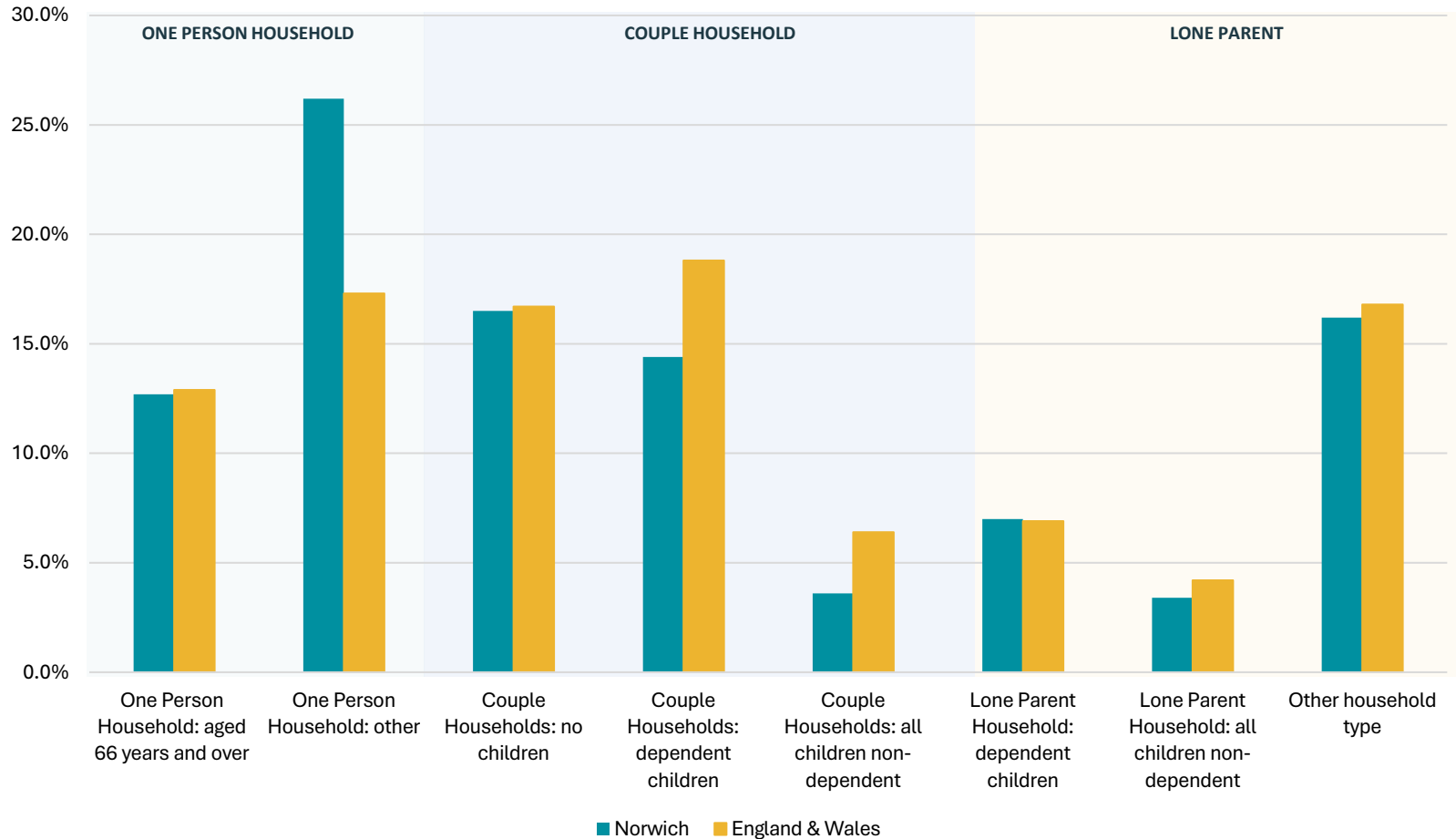
Method Used to Travel to Work

Population by Age



# 1. PEOPLE

## HOUSEHOLD COMPOSITION IN NORWICH, 2021



- According to the 2021 Census, the most common type of household in Norwich is a one-person household. It is notable, that **26.2%** of respondents stated that they live in a one-person household (other), which is **8.9%** higher than results for England and Wales.

Overview

Population by Religion

Population by Ethnic Group

Household Composition

Children Living in Low-Income Families

Qualifications

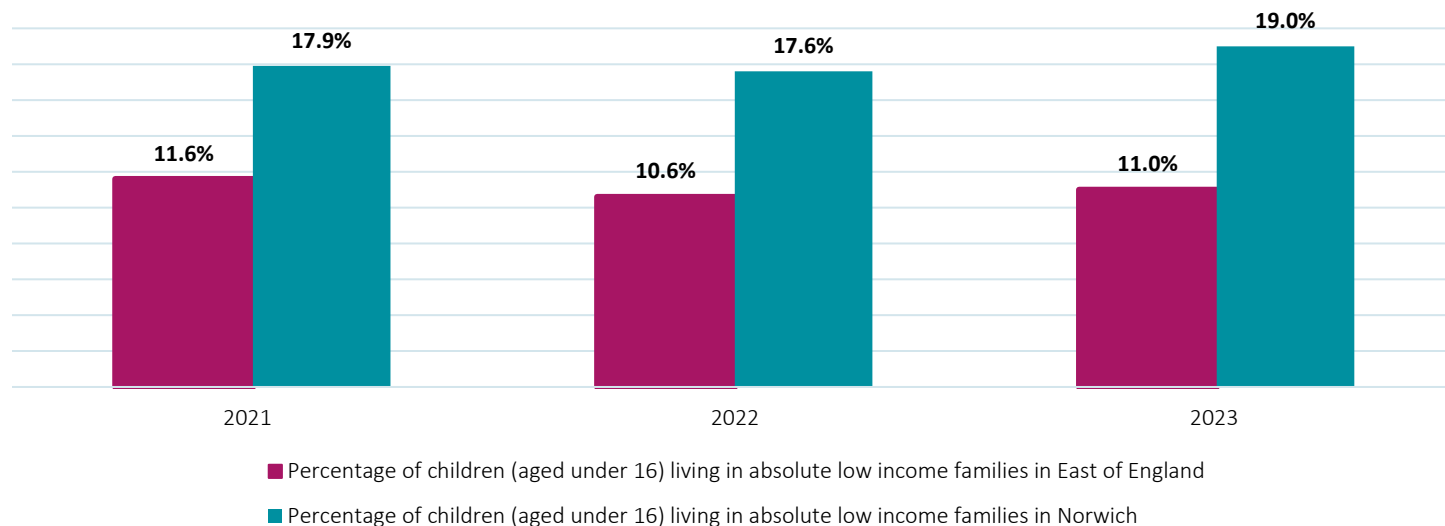
Method Used to Travel to Work

Population by Age



# 1. PEOPLE

## CHILD POVERTY, 2023



| LOCATION                     | Percentage of children living in absolute low-income families |
|------------------------------|---|
| Breckland                    | 12.3  |
| Broadland                    | 8.6   |
| Great Yarmouth               | 17.3  |
| King's Lynn and West Norfolk | 14.0  |
| North Norfolk                | 13.9  |
| <b>Norwich</b>               | <b>19.0</b>   |
| South Norfolk                | 8.3   |

- In 2023, the percentage of children living in absolute low-income families was **19%** - this is **8%** higher than in the East of England.
- The table shows the percentage of children living in absolute low-income in 2023 by neighbouring districts. Norwich has a significantly higher rate (in comparison to the other districts).

Overview

Population by Religion

Population by Ethnic Group

Household Composition

Children Living in Low-Income Families

Qualifications

Method Used to Travel to Work

Population by Age



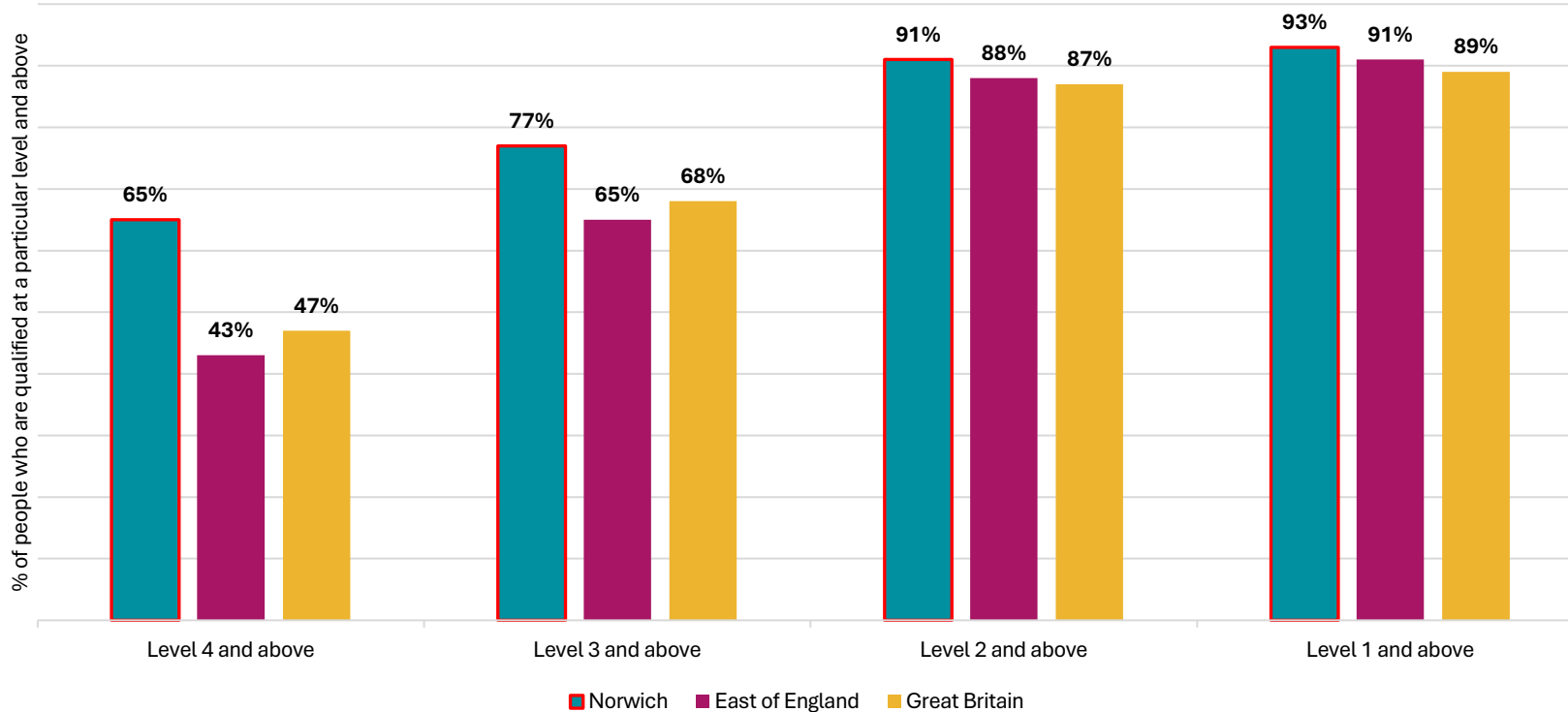
KEY THEMES





# 1. PEOPLE

## QUALIFICATION BY LEVEL, 2023



- Norwich has consistently performed better across all levels of qualifications compared to the East of England and Great Britain.
- It is notable that Norwich has a significantly higher percentage of people qualified at a **level 4 and above (65%)**.

Overview

Population by Religion

Population by Ethnic Group

Household Composition

Children Living in Low-Income Families

**Qualifications**

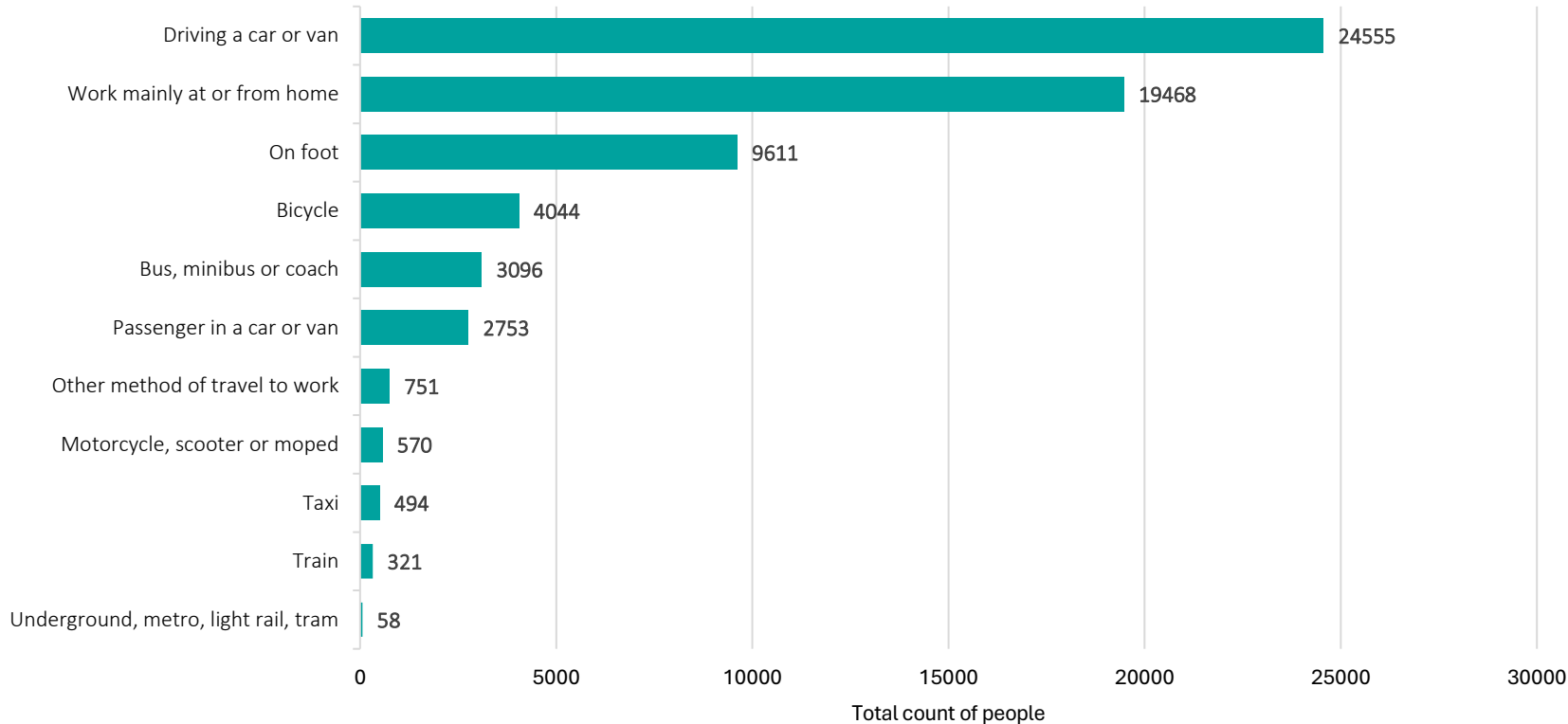
Method Used to Travel to Work

Population by Age



# 1. PEOPLE

## METHOD USED TO TRAVEL TO WORK, 2021



- Overview
- Population by Religion
- Population by Ethnic Group
- Household Composition
- Children Living in Low-Income Families
- Qualifications
- Method Used to Travel to Work**
- Population by Age

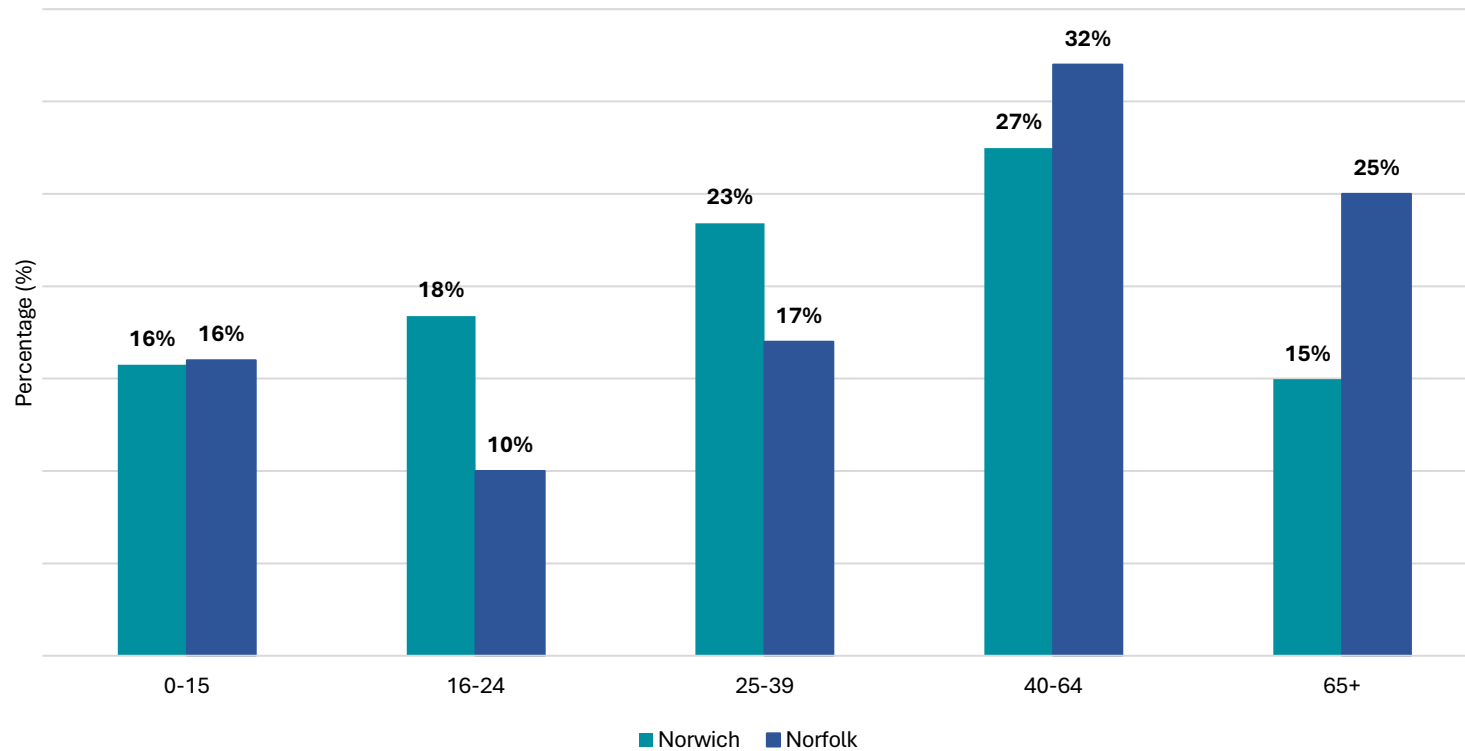
- In 2021, driving a car or a van was the most popular method to travel to work and was significantly higher than all other methods.
- In 2021, the second most popular method was homeworking with **29.6%** of people aged 16 years and over in employment in Norwich working mainly at or from home\*

\*Please note, at the time of Census 2021, UK government guidance and lockdown restrictions resulted in unprecedented changes to travel behaviour and patterns. Therefore, the ONS recommends that figures are reviewed as estimates only.



# 1. PEOPLE

## POPULATION ESTIMATES BY AGE, 2023



- Norwich has an estimated population of around **145,591** people and is the most densely populated district in Norfolk, with 3,731 residents per kilometre.
- Norwich has a younger age profile than Norfolk, with **41%** of people aged between 16-39 years old, compared with **27%** for Norfolk.

Overview

Population by Religion

Population by Ethnic Group

Household Composition

Children Living in Low-Income Families

Qualifications

Method Used to Travel to Work

Population by Age





# KEY THEMES 2.PLACE

## INTRODUCTION

The place theme seeks to understand data relating to the following areas:

- **Housing costs and affordability**, which considers housing costs and housing affordability, in terms of both renting and buying.
- **Fuel Poverty**, which considers the proportion of fuel-poor households in the city.
- **Sustainable travel**, considers the uptake and coverage of Beryl transport options.
- **Carbon emissions**, which considers carbon emissions across multiple sectors.
- **Waste and Recycling**, which considers waste and recycling rates in Norwich.
- **Open Spaces**, which considers parks and open spaces that have been formally recognised for people to enjoy.

## SUMMARY

Norwich was identified by the think-tank, Centre for Cities, as one of the five ‘fast growth cities’ in England.

This year, the coveted [Green Flag Award](#) has recognised **6** parks and open spaces in Norwich as outstanding examples of green outdoor spaces for people to enjoy.

Over the period of 2017-2021, the average tonnage of CO2 emissions for the Norwich domestic sector was **172**. At a local authority level, Norwich City Council continues to implement an ambitious programme to reduce its own carbon emissions [reducing this by two thirds since 2008](#).

Against this background, data shows that, in 2022, **12.2%** of households experienced fuel poverty – this is higher than the proportion of fuel-poor households in the East of England.

Norwich saw the East of England’s largest percentage-point fall in the proportion of households in the social rented sector. Despite the decrease, Norwich was in the highest 3% of English local authority areas for the share of households in the social-rental sector, with a social housing stock of approximately 14,400.

### Overview

Average Monthly Rent

Housing by Tenure & Average House Price

Households in Fuel Poverty

Beryl Journeys

Carbon Emissions by Sector in Norwich

Waste and Recycling & Parks and Open Spaces



KEY THEMES





# 2. PLACE

## AVERAGE PRIVATE MONTHLY RENT, 2024



- Overview
- Average Monthly Rent**
- Housing by Tenure & Average House Price
- Households in Fuel Poverty
- Beryl Journeys
- Carbon Emissions by Sector in Norwich
- Waste and Recycling & Parks and Open Spaces

### KEY THEMES



## AVERAGE MONTHLY RENT FOR A COUNCIL HOME, 2024

| Size of the property  | Council home (£) |
|-----------------------|------------------|
| One bedroom           | 327              |
| Two bedrooms          | 350              |
| Three bedrooms        | 387              |
| Four or more bedrooms | 418-466*         |

\* Calculated on four to five-bedroom homes only

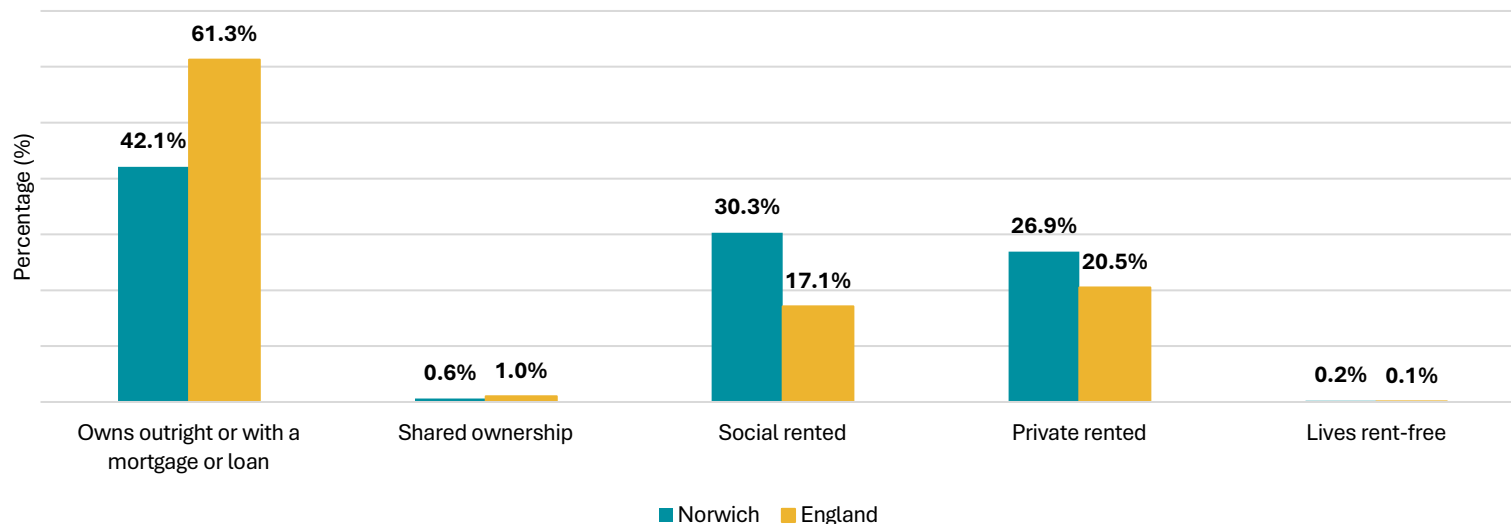
- Norwich has the highest private average monthly rents across all property sizes, compared to other districts.
- As shown in the table, living in a council property is considerably cheaper than renting privately.





# 2. PLACE

## HOUSING BY TENURE, 2021



- Norwich saw the East of England’s largest percentage-point fall in the proportion of households in the social rented sector (from 32.7% in 2011 to 30.3% in 2021). Despite the decrease, Norwich was in the highest **3%** of English local authority areas for the share of households in the social rented sector in 2021.

## AVERAGE HOUSE PRICE, 2024

| AREA    | 2024     | 2023     | DIFFERENCE |
|---------|----------|----------|------------|
| Norwich | £244,024 | £242,452 | 0.6%       |
| Norfolk | £276,043 | £278,287 | -0.8%      |

Overview

Average Monthly Rent

Housing by Tenure & Average House Price

Households in Fuel Poverty

Beryl Journeys

Carbon Emissions by Sector in Norwich

Waste and Recycling & Parks and Open Spaces



KEY THEMES





# 2. PLACE

## HOUSEHOLDS IN FUEL POVERTY, 2021-2022



Overview

Average Monthly Rent

Housing by Tenure & Average House Price

Households in Fuel Poverty

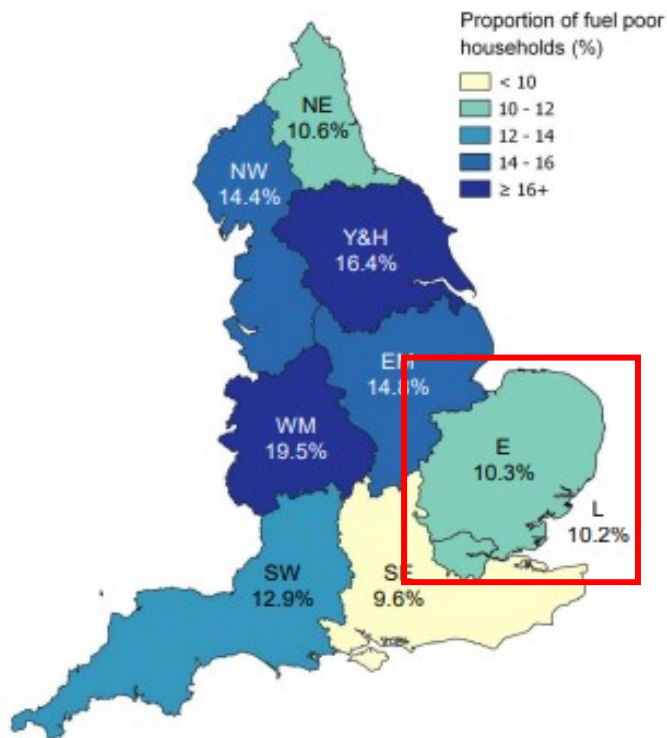
Beryl Journeys

Carbon Emissions by Sector in Norwich

Waste and Recycling & Parks and Open Spaces

- Fuel poverty data for 2023 is not yet available for Norwich. However, the proportion of fuel-poor households in the **East of England** for 2023 was **10.3%**.
- Please note, the lowest fuel poverty rates in 2023 were the Southeast (9.6%), East (10.3%) and London (10.2%). This could be due to a combination of median fuel poverty energy efficiency ratings being higher than the national median and median incomes, that are greater than £27,400.

### KEY THEMES



Data Source: [Fuel poverty statistics - GOV.UK](#)

[Sub-regional fuel poverty in England, 2024 report \(2022 data\) - GOV.UK](#)



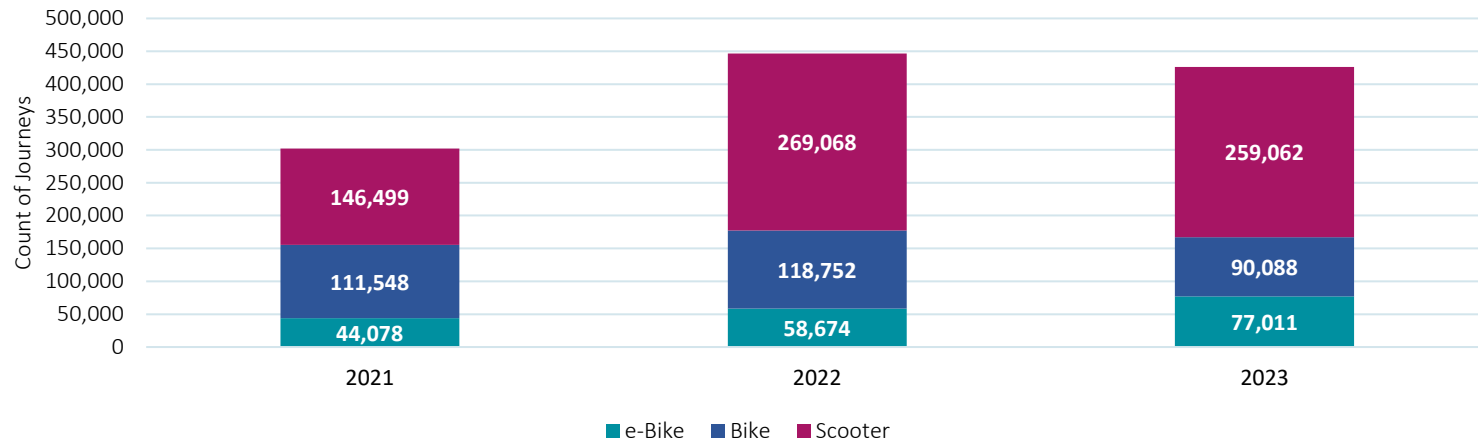


HOME

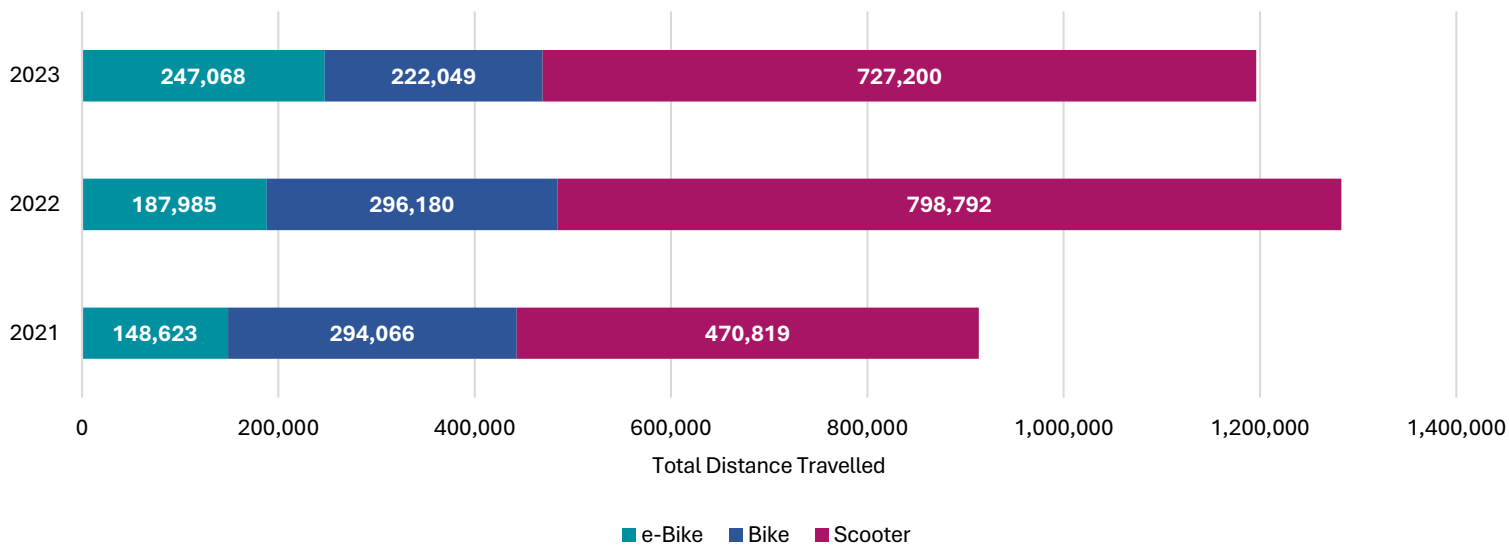
# 2. PLACE

## BERYL JOURNEYS, 2023

TOTAL JOURNEYS BY VEHICLE TYPE



TOTAL DISTANCE TRAVELLED (KM) BY VEHICLE TYPE



Overview

Average Monthly Rent

Housing by Tenure & Average House Price

Households in Fuel Poverty

Beryl Journeys

Carbon Emissions by Sector in Norwich

Waste and Recycling & Parks and Open Spaces



KEY THEMES



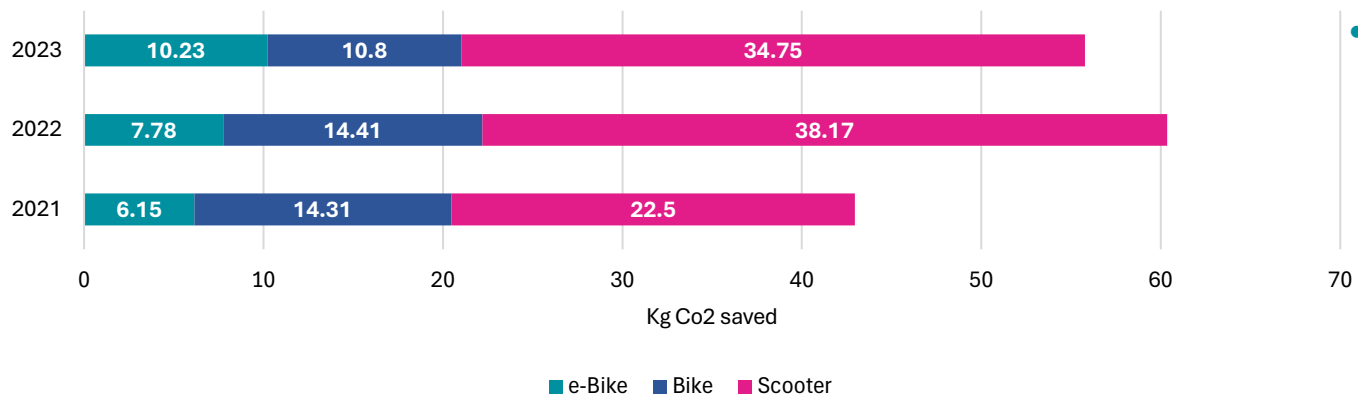




HOME

# 2. PLACE

### TOTAL TONNES CO2 SAVED BY BERYL VEHICLE TYPE, 2023



- Despite the total Beryl journeys decreasing in 2023, the total CO2 saved was **55.78** tonnes.

Overview

Average Monthly Rent

Housing by Tenure & Average House Price

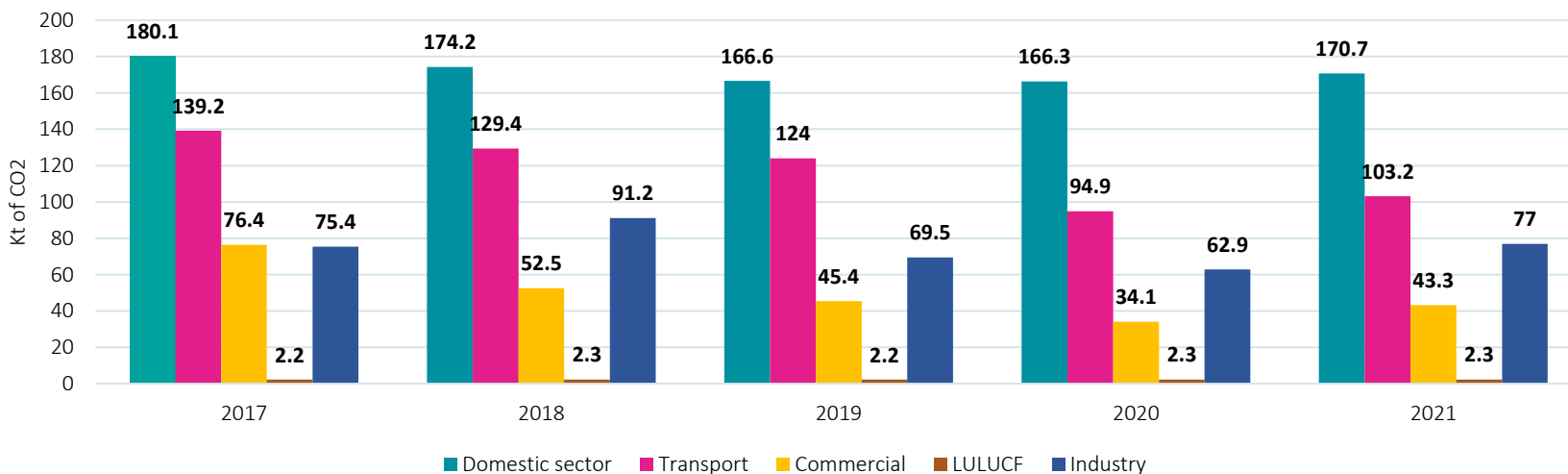
Households in Fuel Poverty

Beryl Journeys

Carbon Emissions by Sector in Norwich

Waste and Recycling & Parks and Open Spaces

### CARBON EMISSIONS BY SECTOR IN NORWICH, 2021



- The domestic sector (including electricity-related emissions) has consistently had the highest carbon emissions in Norwich.
- Between 2017 and 2021, the domestic sector's average CO2 emissions were **172** tonnes.

Data Source: [Beryl, A bike & scooter sharing scheme in UK towns and cities](#)  
 Environment - Area reports - Norfolk Insight



KEY THEMES





# 2. PLACE

## PERCENTAGE OF WASTE SENT FOR REUSE/ RECYCLING



## PARKS AND OPEN SPACES

The Green Flag Award scheme recognises and rewards well-managed parks and green spaces, setting the benchmark standard for the management of recreational outdoor spaces across the United Kingdom and around the world. This year, the coveted Green Flag has recognised the following parks and open spaces in Norwich as outstanding examples of green outdoor spaces for people to enjoy:

- Kett's Heights – *New Winner*
- Jenny Lind Park – *New Winner*
- Heigham Park – *New Winner*
- Mousehold Heath
- Waterloo Park
- Eaton Park

Overview

Average Monthly Rent

Housing by Tenure & Average House Price

Households in Fuel Poverty

Beryl Journeys

Carbon Emissions by Sector in Norwich

Waste and Recycling & Parks and Open Spaces



### KEY THEMES





HOME

# KEY THEMES 3. ECONOMY

## INTRODUCTION

The economy theme seeks to understand the data relating to the following areas:

- **Business enterprise**, which considers enterprises by employment and business resilience.
- **Business characteristics**, which considers the employment rate, highest employment sectors and job density in Norwich.
- **Earnings and pay**, which considers pay levels and pay inequalities.
- **Out of work benefits**, which considers out-of-work benefit claims in Norwich.

## SUMMARY

The diversity of Norwich’s economy is one of its greatest strengths, helping the city to remain relatively stable during financial challenges, such as Covid-19 and the war in Ukraine.

Norwich full-time employees are, on average, paid **9.7%** less than full time employees in the UK. Currently, Norwich has **81** accredited employers paying the [Living Wage](#) to their workers – and Norwich City Council is proud to have the Living Wage accreditation from the national [Living Wage Foundation](#).

Norwich demonstrates a dynamic economic landscape and has a **0.3%** higher employment rate than England for persons aged 16-64. The city’s most prominent sectors include:

- Wholesale and retail trades (which includes the repair of motor vehicles)
- Education
- Accommodation and food services
- Public administration and defence and
- Health and social work

Yet, the city centre is underperforming with a risk of ‘hollowing out’ due to the significant decline in employment in certain areas – please see further information [here](#).

The balance in gender representation in employment showcases progressive trends in the city. For example, the female employment rate in Norwich is **significantly higher** than in Norfolk and England.

Overview

Enterprises

Economic Activity

Economic Geography

Employment

Employment Continued

Earnings

Out-of-Work Benefits



KEY THEMES

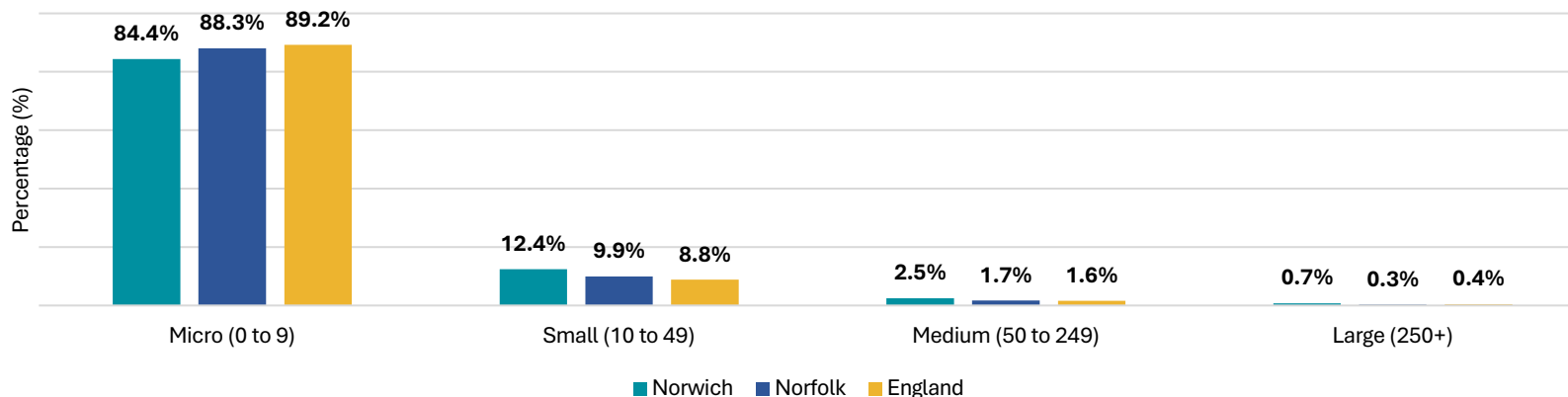


Please select ‘Home’ to return to the main menu or select a ‘Key Theme’ in the toolbar for further information on the ‘State of Norwich’.

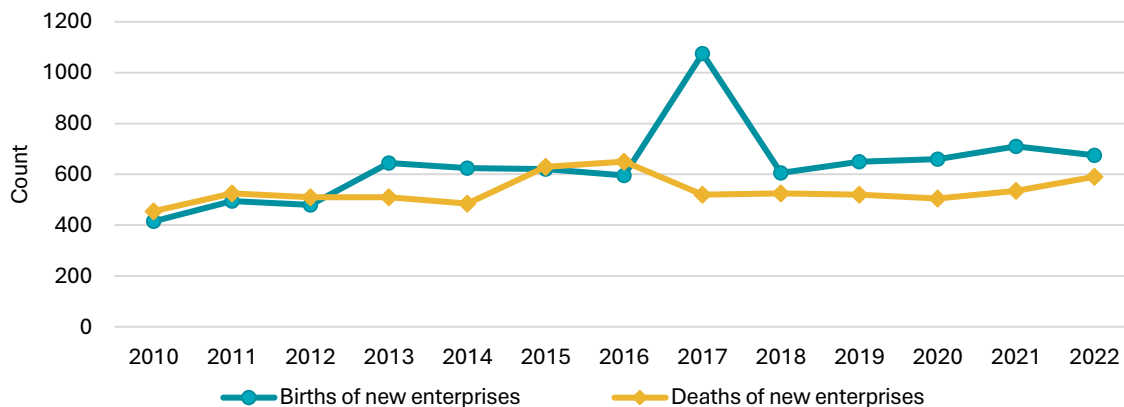


# 3. ECONOMY

## ENTERPRISES BY EMPLOYMENT BAND SIZE, 2023



## BIRTHS AND DEATHS OF NEW ENTERPRISES FOR NORWICH, 2022



**93%**  
ONE-YEAR SURVIVAL OF  
NEWLY-BORN ENTERPRISES IN  
NORWICH  
(2021)

**93.4%**  
ONE – YEAR SURVIVAL OF  
NEWLY-BORN ENTERPRISES IN  
ENGLAND  
(2021)

- Enterprises by employment band size show a similar picture to Norfolk and England, with a slightly lower proportion of micro-sized businesses in Norwich.
- In 2022, **675** new enterprises were established in Norwich.
- Overall, one-year survival rates in Norwich were similar to the average in England.

Overview

Enterprises

Economic Activity

Economic Geography

Employment

Employment Continued

Earnings

Out-of-Work Benefits



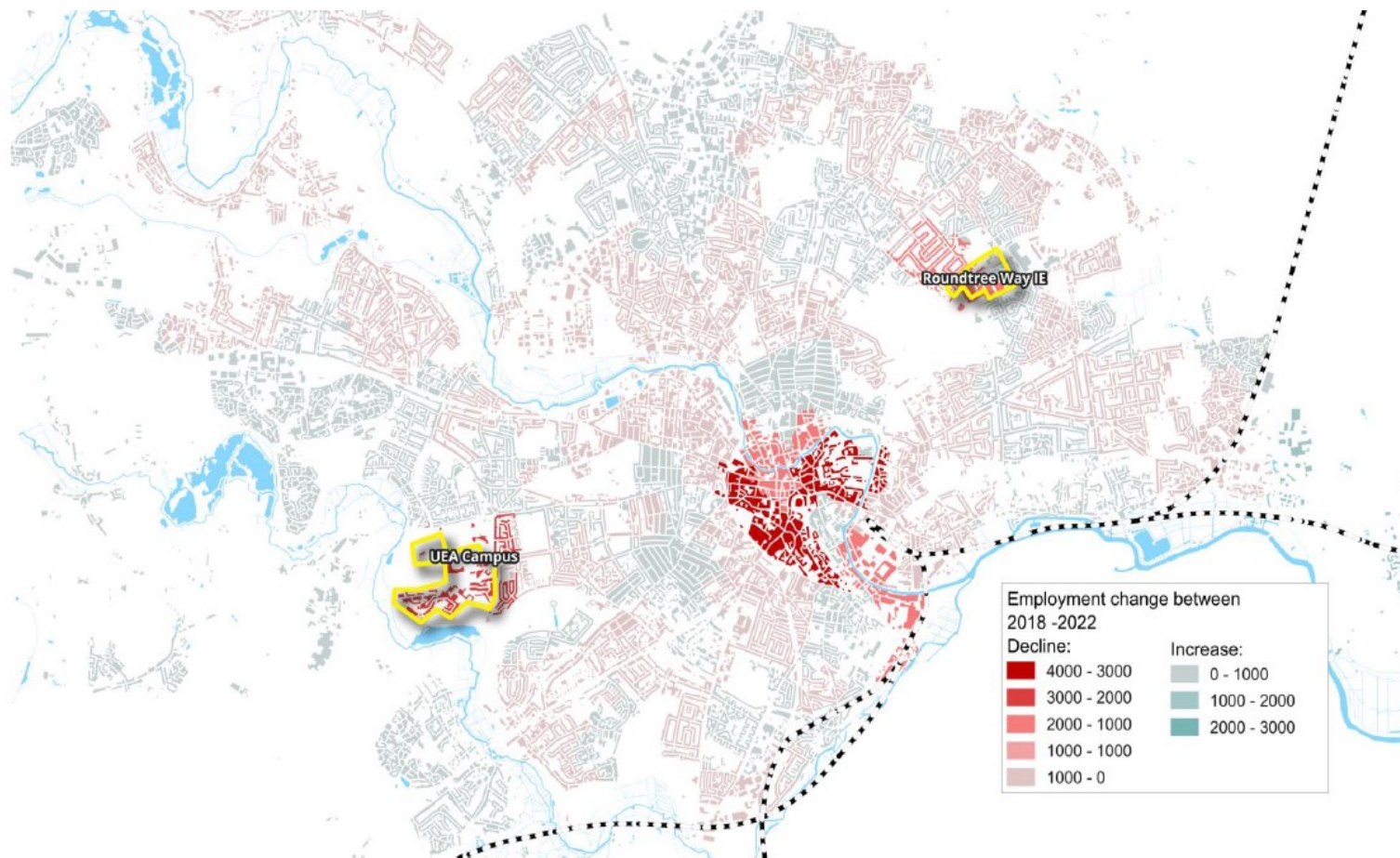
KEY THEMES





# 3. ECONOMY

## ECONOMIC ACTIVITY NORWICH CITY CENTRE



- Norwich city centre is underperforming with a risk of 'hollowing out'\* due to the significant decline in employment in certain areas (from 3,000 to 4,000 across 2018-2022). This decline has been caused by the loss of higher-value knowledge- intensive jobs and national retail trends.

\*Hollowing out: Drawing economic activity away from the city centre (as opposed to into it)

- Overview
- Enterprises
- Economic Activity**
- Economic Geography
- Employment
- Employment Continued
- Earnings
- Out-of-Work Benefits

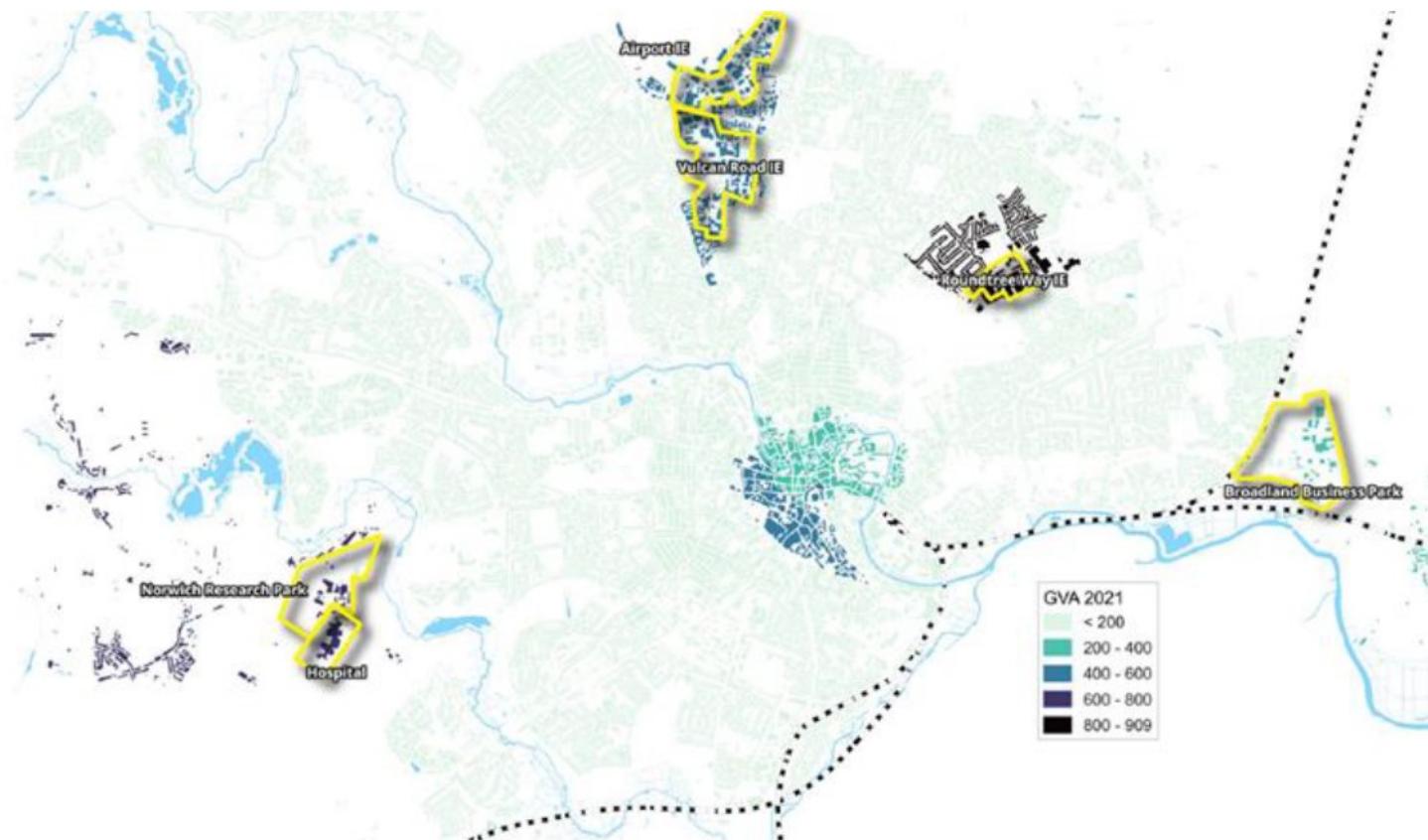


### KEY THEMES



# 3. ECONOMY

## ECONOMIC GEOGRAPHY



- Norwich is now home to a unique economic geography with **five** distinct clusters. They are:
  - Norfolk & Norwich Hospital, and Research Park
  - Norwich Airport
  - Vulcan Road
  - Roundtree Way
  - Broadland Business Park

Overview

Enterprises

Economic Activity

Economic Geography

Employment

Employment Continued

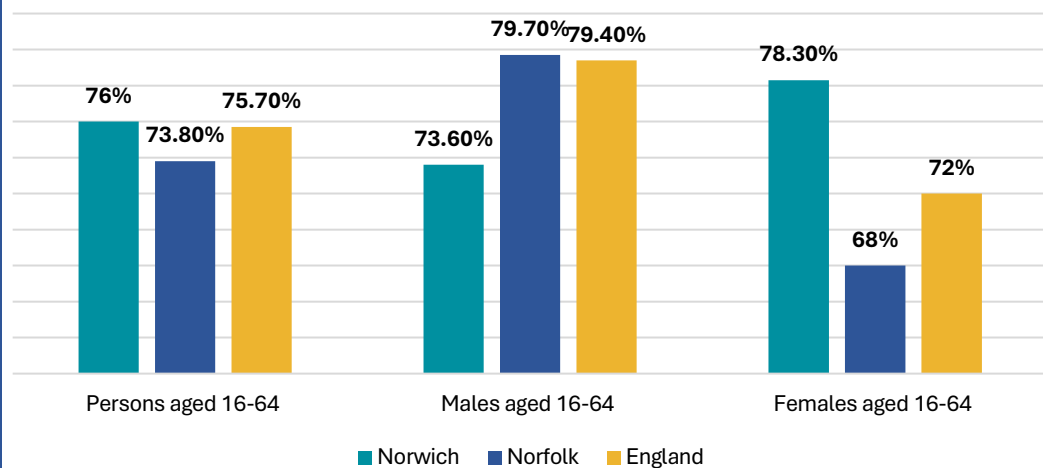
Earnings

Out-of-Work Benefits



# 3. ECONOMY

## EMPLOYMENT RATE BY GENDER, MARCH 2024



- Norwich has a higher employment rate for persons aged 16-64 than Norfolk and England.
- The female employment rate in Norwich is significantly higher than Norfolk and England.
- Notably, **34.5%** of females in Norwich are working part-time compared to **12.7%** of males.

Overview

Enterprises

Economic Activity

Economic Geography

**Employment**

Employment Continued

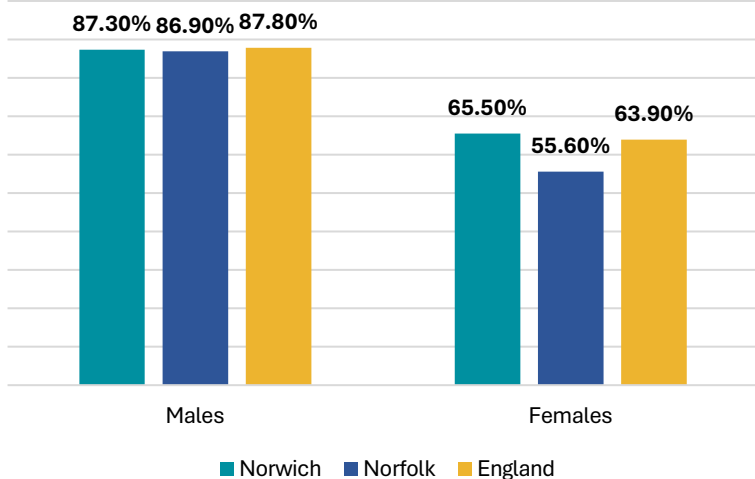
Earnings

Out-of-Work Benefits

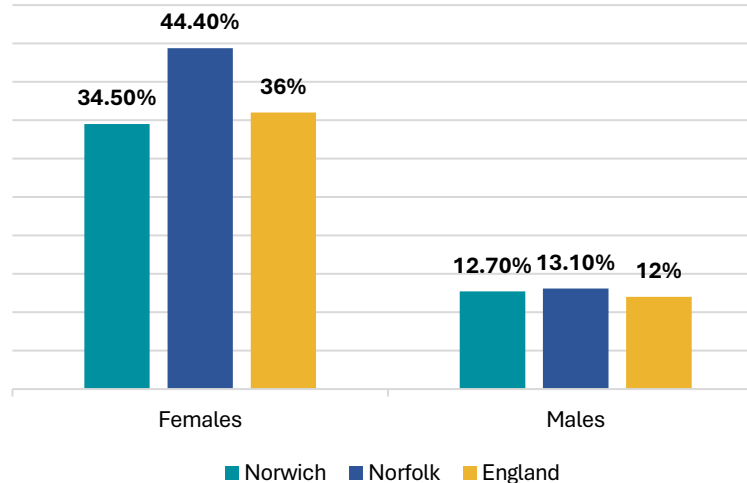
KEY THEMES



## PEOPLE WORKING FULL-TIME BY GENDER



## PEOPLE WORKING PART TIME BY GENDER

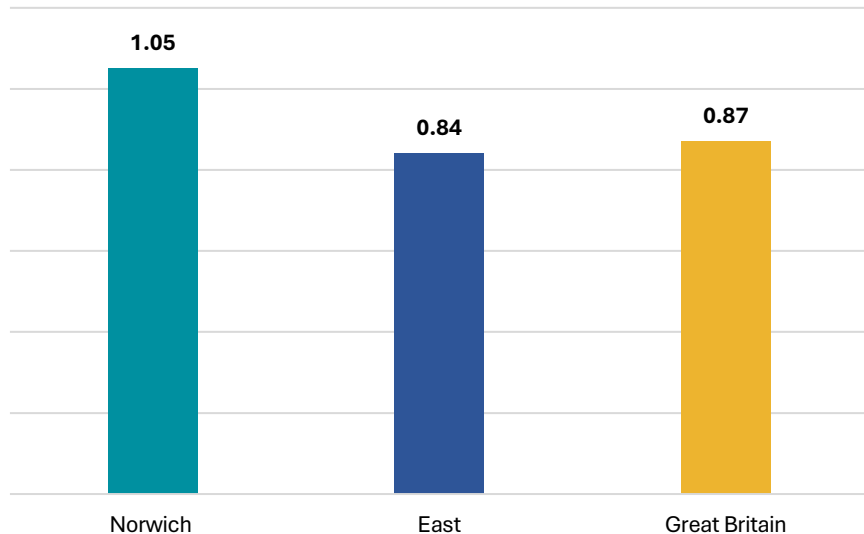




HOME

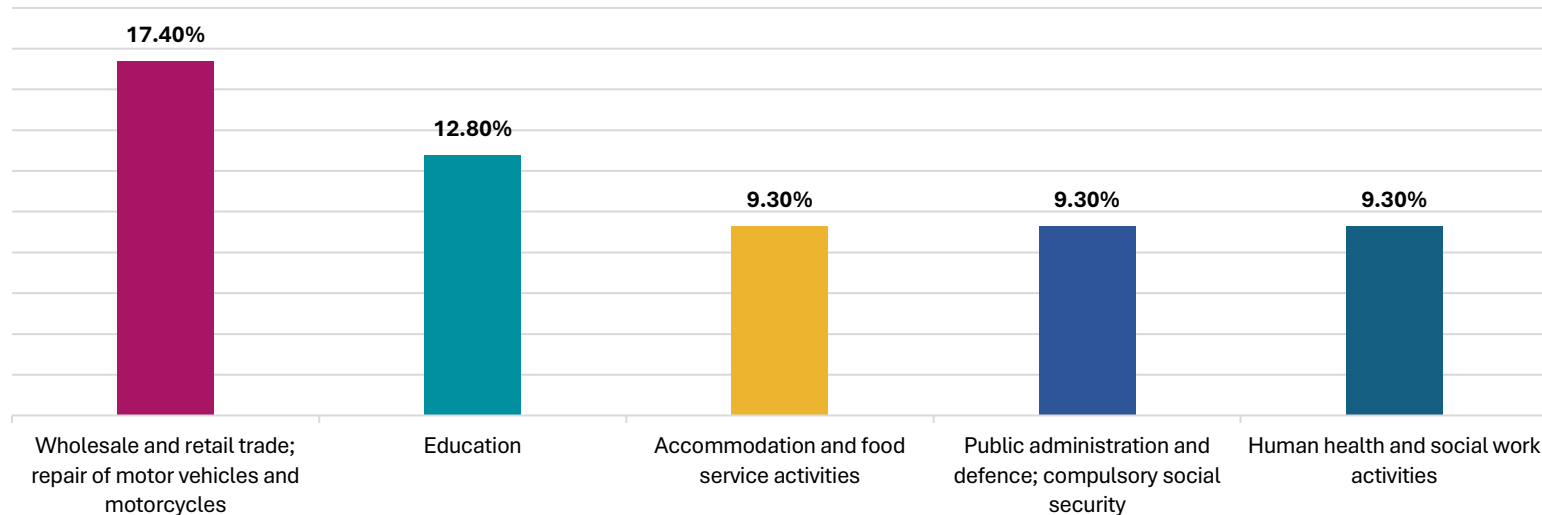
# 3. ECONOMY

## JOBS DENSITY, 2022



- A job density of 1 means that there is one job for every resident aged 16-64.
- In 2022, Norwich has a job density rate of **1.05** which is higher than the East of England.
- The wholesale and retail trades is the highest employment sector in Norwich (**17.4%**).
- 'Retail', 'motor trades', and 'education' are unique sector strengths with a declining presence in England but strong presence in Norwich.

## TOP 5 SECTORS BY EMPLOYMENT, 2022



Overview

Enterprises

Economic Activity

Economic Geography

Employment

**Employment Continued**

Earnings

Out-of-Work Benefits



KEY THEMES







# 3. ECONOMY

## MEDIAN ANNUAL PAY FOR FULL TIME WORKERS, 2023

NORWICH

£36,256

MALE FULL-TIME WORKERS

£29,831

FEMALE FULL-TIME WORKERS

ENGLAND

£37,743

MALE FULL-TIME WORKERS

£31,605

FEMALE FULL-TIME WORKERS

- The annual pay for male full-time workers in Norwich is **3.9%** less than the national average.
- The annual pay for female full-time workers in Norwich is **5.6%** less than the national average.

Overview

Enterprises

Economic Activity

Economic Geography

Employment

Employment Continued

Earnings

Out-of-Work Benefits

## MEDIAN GROSS WEEKLY EARNINGS, 2024 (Provisional Data)

| LOCATION                     | Median gross weekly earnings for full-time employees |
|------------------------------|--|
| Breckland                    | 635.0  |
| Broadland                    | 720.5  |
| Great Yarmouth               | 631.0  |
| King's Lynn and West Norfolk | 676.8  |
| North Norfolk                | 623.4  |
| <b>Norwich</b>               | <b>657.6</b>   |
| South Norfolk                | 691.1  |

- Norwich full-time employees are, on average, paid **9.7%** less than full-time employees in the UK.

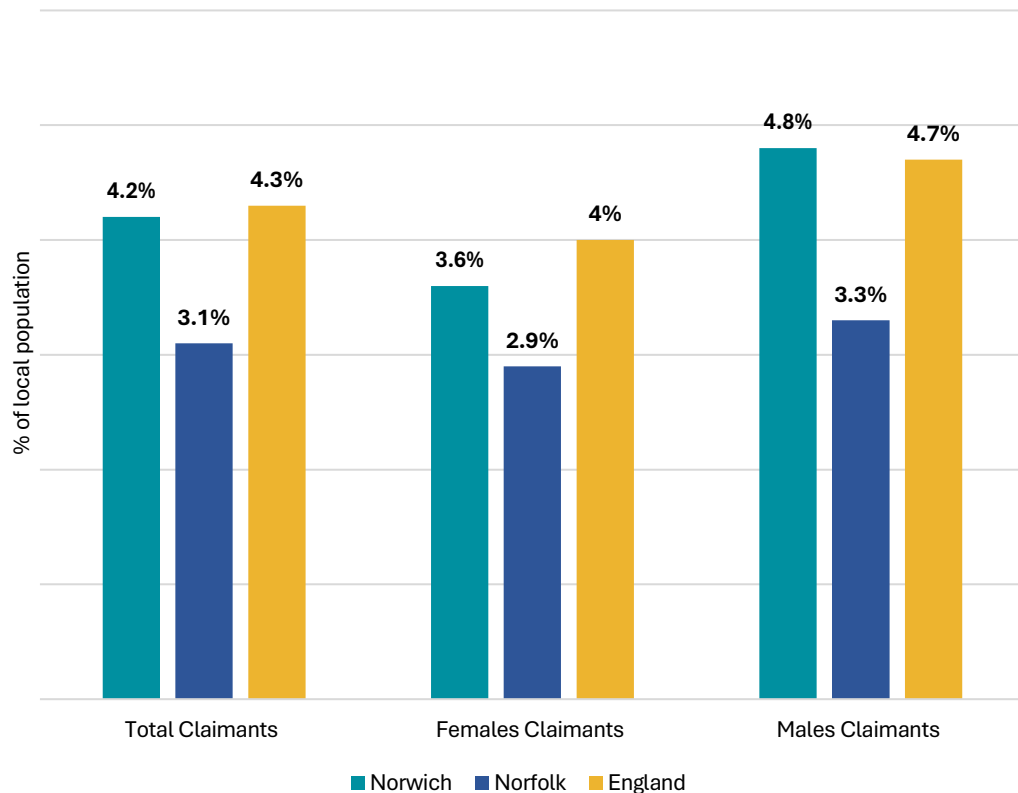


KEY THEMES



# 3. ECONOMY

## CLAIMANTS BY GENDER IN NORWICH, OCTOBER 2024



- In October 2024, Norwich had a total of **4,275** claimants for out-of-work benefits.
- Norwich has a significantly higher claimant count than Norfolk – in October 2024 there was a difference of **1.1%**.
- Overall, Norwich has similar claimant rate to England.

Overview

Enterprises

Economic Activity

Economic Geography

Employment

Employment Continued

Earnings

Out-of-Work Benefits

## CLAIMANT COUNT IN NORWICH, OCTOBER 2024

**4,275**  
TOTAL CLAIMANTS 16+

**1,850**  
FEMALE CLAIMANTS 16+

**2,425**  
MALE CLAIMANTS 16+





HOME

# 4. WELLBEING

## INTRODUCTION

The wellbeing theme seeks to understand the data relating to the following areas:

- **Community wellbeing and quality of life**, which considers a self-reported measure of wellbeing and life satisfaction.
- **Health outcomes**, which considers life expectancies at birth, and healthy lifestyles.
- **Crime**, which considers the 12-month rolling crime rate for all crimes.
- **Excess deaths in winter**, which considers excess winter deaths measured as the ratio of extra deaths from all causes that occur in all those aged 85 and over in the winter months.

Females aged 85 and over in Norwich have significantly higher excess winter deaths than Norfolk and England. It should be noted here that the struggle to keep homes warm over winter may be increased with the recent restriction on Winter Fuel Payments.

Over 2021-2022, Norwich adults reported low levels of happiness and had the lowest happiness scores out of all neighbouring districts. However, life satisfaction in Norwich has increased significantly since 2020/21.

### Overview

Personal Wellbeing

Personal Wellbeing (Continued)

Personal Wellbeing (Continued)

Crime

Life Expectancy and Suicide Rates

Excess Deaths in Winter

## SUMMARY

The cost of living has risen drastically in Norwich. The city sits in the third highest quartile against the [Cost of Living Vulnerability Index](#) with a score of **978**. This figure is significantly above the average for all English district local authorities (749).

As a result, residents are particularly vulnerable to being pulled into poverty or destitution.



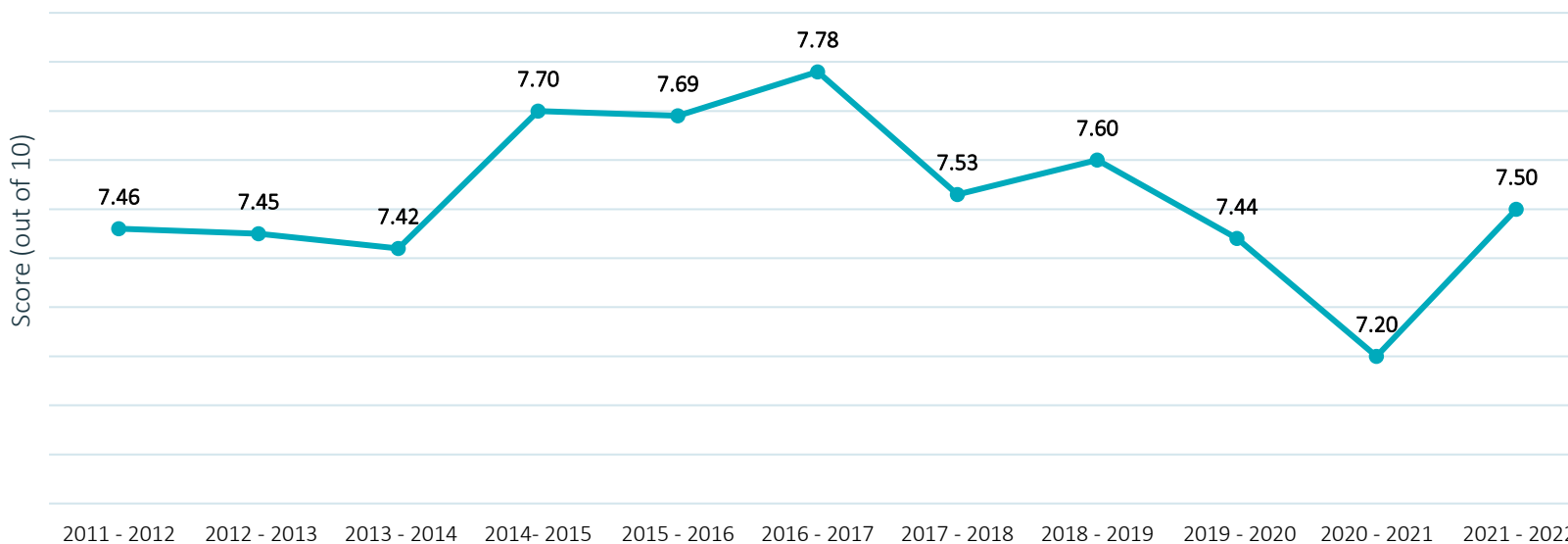
KEY THEMES





# 4. WELLBEING

## LIFE SATISFACTION IN NORWICH, 2011-2022



Overview

Personal Wellbeing

Personal Wellbeing (Continued)

Personal Wellbeing (Continued)

Crime

Life Expectancy and Suicide Rates

Excess Deaths in Winter

KEY THEMES



| LOCATION                     | Average ratings of personal life satisfaction (score out of 10) |
|------------------------------|---|
| Breckland                    | 7.6   |
| Broadland                    | 7.7   |
| Great Yarmouth               | 8.0   |
| King's Lynn and West Norfolk | 7.5   |
| North Norfolk                | 7.6   |
| <b>Norwich</b>               | <b>7.5</b>  |
| South Norfolk                | 7.4   |

- Life satisfaction scores in Norwich, alongside King’s Lynn and West Norfolk and South Norfolk, are slightly lower than the UK score of **7.54**.
- However, life satisfaction in Norwich has increased significantly from 2020-2021.

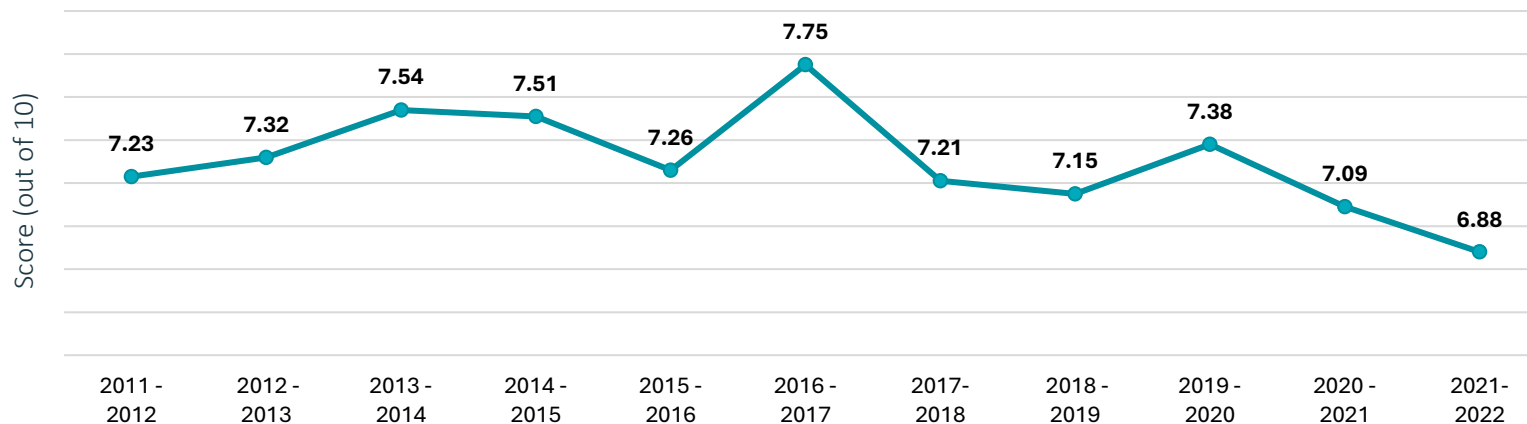




HOME

# 4. WELLBEING

## HAPPINESS, 2011-2022



| LOCATION                     | Average ratings of personal happiness (score out of 10) |
|------------------------------|---|
| Breckland                    | 7.8   |
| Broadland                    | 7.6   |
| Great Yarmouth               | 7.6   |
| King's Lynn and West Norfolk | 7.6   |
| North Norfolk                | 7.3   |
| <b>Norwich</b>               | <b>6.9</b>  |
| South Norfolk                | 7.4   |

- Data for 2021/22, shows that Norwich has the lowest happiness score (at **6.88**) of all districts and a lower score than the UK overall (**7.45**).

- Overview
- Personal Wellbeing
- Personal Wellbeing (Continued)**
- Personal Wellbeing (Continued)
- Crime
- Life Expectancy and Suicide Rates
- Excess Deaths in Winter



KEY THEMES

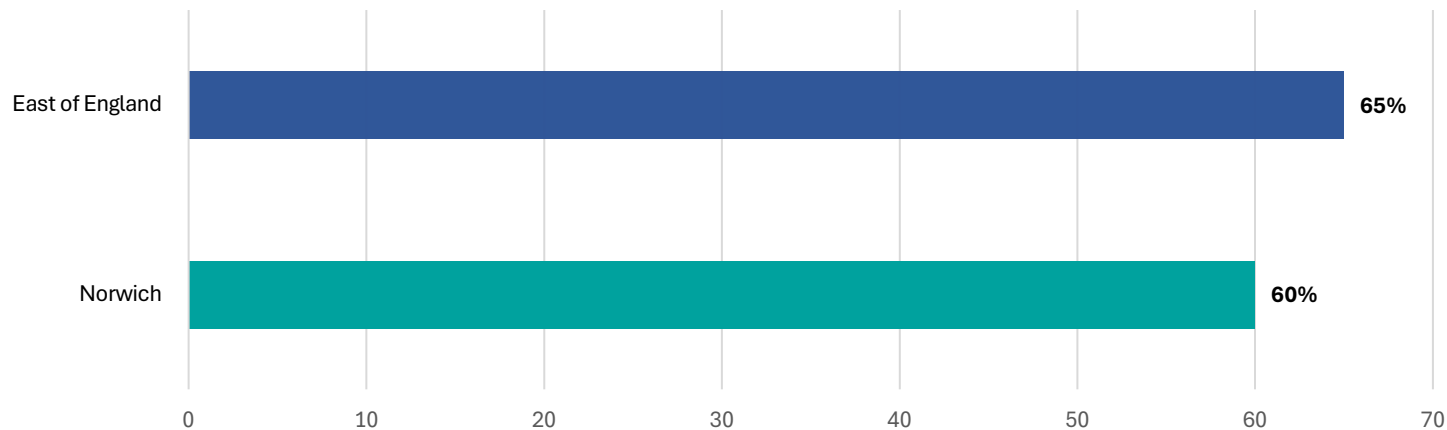




HOME

# 4. WELLBEING

### PERCENTAGE OF ADULTS CLASSED AS OVERWEIGHT OR OBESE, 2022-2023



Overview

Personal Wellbeing

Personal Wellbeing (Continued)

Personal Wellbeing (Continued)

Crime

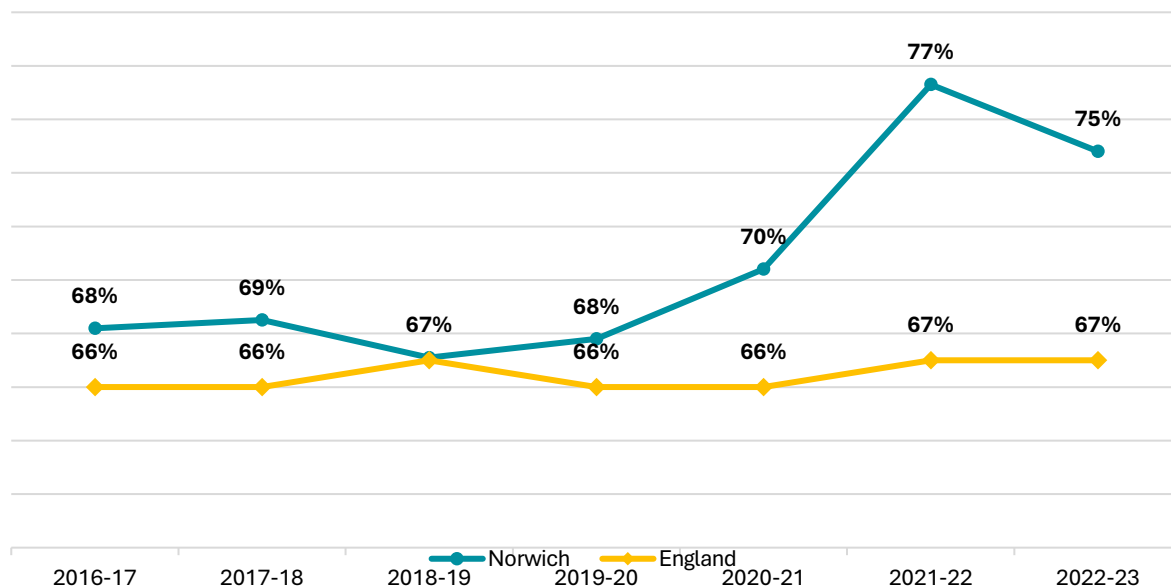
Life Expectancy and Suicide Rates

Excess Deaths in Winter

KEY THEMES



### PERCENTAGE OF PHYSICALLY ACTIVE ADULTS, 2016-2023



- Norwich is **8 percentage points** higher than the national average of physically active adults for the period 2022 to 2023.
- Over the last three years, Norwich has seen a sharp increase in adults being physically active.

Data Sources: [Obesity Profile - Data](#) | [Fingertips](#) | [Department of Health and Social Care](#)





HOME

# 4. WELLBEING

## ROLLING CRIME RATES

| LOCATION                     | Rolling crime rates for September 2023-August 2024 |
|------------------------------|--|
| Breckland                    | 54.6   |
| Broadland                    | 37.3   |
| Great Yarmouth               | 94.4   |
| King's Lynn and West Norfolk | 60.3   |
| North Norfolk                | 41.7   |
| <b>Norwich</b>               | <b>113.6</b>                                       |
| South Norfolk                | 43.5   |

- Norwich has a significantly higher 12-month rolling crime rate than neighbouring districts. It is important to note, that Norwich is the most **densely populated** district.
- Single crime case data have been aggregated for Norwich and rates are calculated per 1,000 population.
- 12-month rolling figures use an average of the population monthly figures over the same period.
- Where the dates for the crime data exceed the latest available date for population estimates, the latest population figure was used for any crime rates after that date (no extrapolating).

Overview

Personal Wellbeing

Personal Wellbeing (Continued)

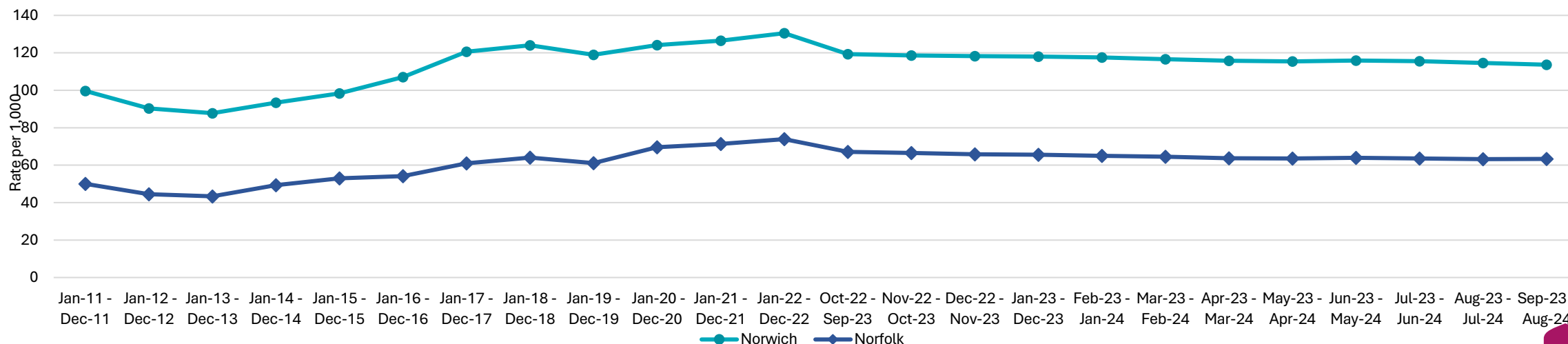
Personal Wellbeing (Continued)

**Crime**

Life Expectancy and Suicide Rates

Excess Deaths in Winter

## ALL CRIME – 12 MONTH ROLLING RATES, 2011-2024



KEY THEMES





# 4. WELLBEING

## LIFE EXPECTANCY AT BIRTH, 2022

LIFE EXPECTANCY AT BIRTH IN NORWICH:  
FEMALE – ALL AGES

83.1  
years

LIFE EXPECTANCY AT BIRTH IN NORWICH:  
MALE – ALL AGES

78.1  
years

Overview

Personal Wellbeing

Personal Wellbeing (Continued)

Personal Wellbeing (Continued)

Crime

Life Expectancy and Suicide Rates

Excess Deaths in Winter

### KEY THEMES



## NUMBER OF SUICIDES DEATHS REGISTERED 2023-2019

| LOCATION                     | 2019      | 2020      | 2021      | 2022      | 2023      |
|------------------------------|-----------|-----------|-----------|-----------|-----------|
| Breckland                    | 15        | 12        | 13        | 11        | 12        |
| Broadland                    | 8         | 9         | 11        | 17        | 13        |
| Great Yarmouth               | 4         | 10        | 12        | 15        | 8         |
| King's Lynn and West Norfolk | 22        | 13        | 10        | 12        | 11        |
| North Norfolk                | 13        | 14        | 17        | 8         | 8         |
| <b>Norwich</b>               | <b>20</b> | <b>13</b> | <b>13</b> | <b>19</b> | <b>19</b> |
| South Norfolk                | 7         | 5         | 15        | 10        | 20        |

- Norwich has the **second highest** number of deaths by suicide out of all local districts.

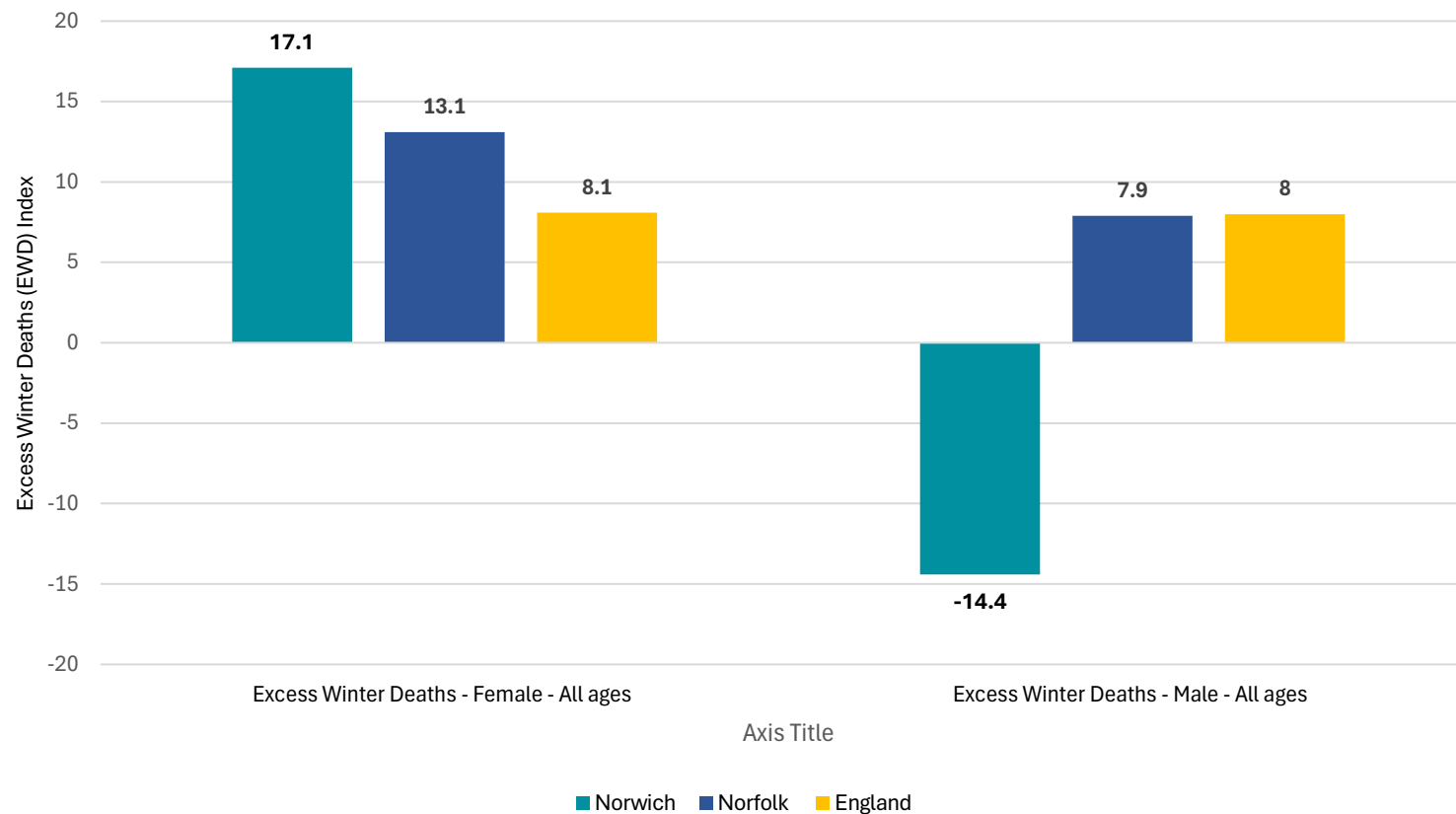






# 4. WELLBEING

## EXCESS DEATHS IN WINTER, AUGUST 2021 TO JULY 2022



- The Excess Winter Deaths Index shows the excess winter deaths measured as the ratio of extra deaths from all causes that occur in all those aged 85 and over in the winter months. This figure is then compared with the expected number of deaths, based on the average of the number of non-winter deaths in those aged 85 and over.

Overview

Personal Wellbeing

Personal Wellbeing (Continued)

Personal Wellbeing (Continued)

Crime

Life Expectancy and Suicide Rates

Excess Deaths in Winter



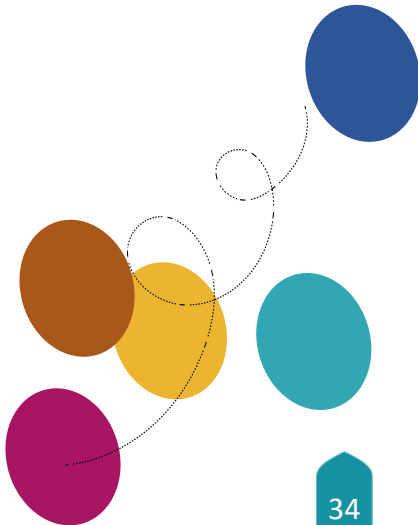


HOME

# VERSION CONTROL

| STATE OF NORWICH |                  |
|------------------|------------------|
| Owner            | Strategy Manager |
| Approval level   | Strategy Manager |
| Version          | 1.0              |
| Review period    | Annually         |
| Review date      | December 2025    |
| VERSION CONTROL  |                  |

| Date  | Version | Reason   | Author                                   |
|---|---------|--|--|
| Published on the 20 <sup>th</sup> December 2024 | 1.0     | Update and design refresh of the 2023 State of Norwich | Strategy and Performance Support Officer |
|   |         |  |  |
|   |         |  |  |
|   |         |  |  |



KEY THEMES

