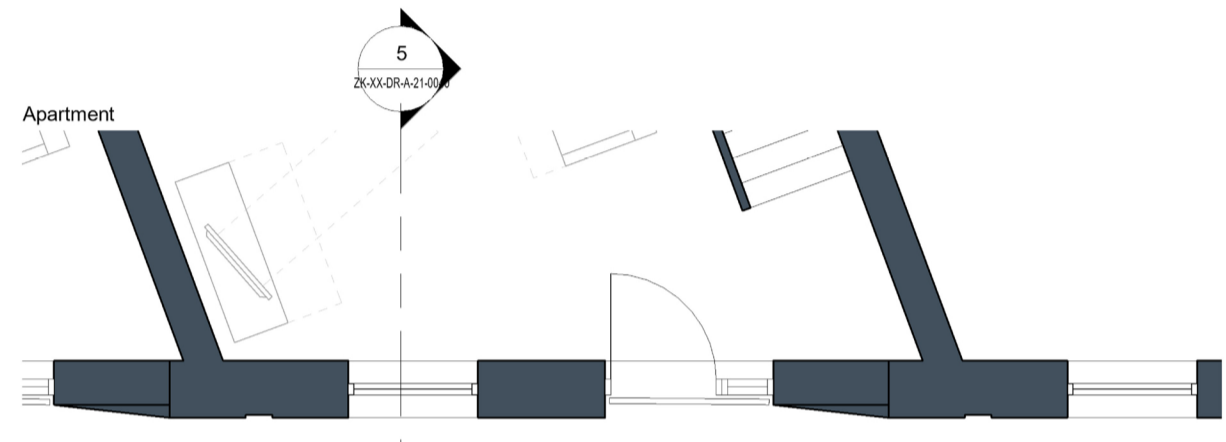
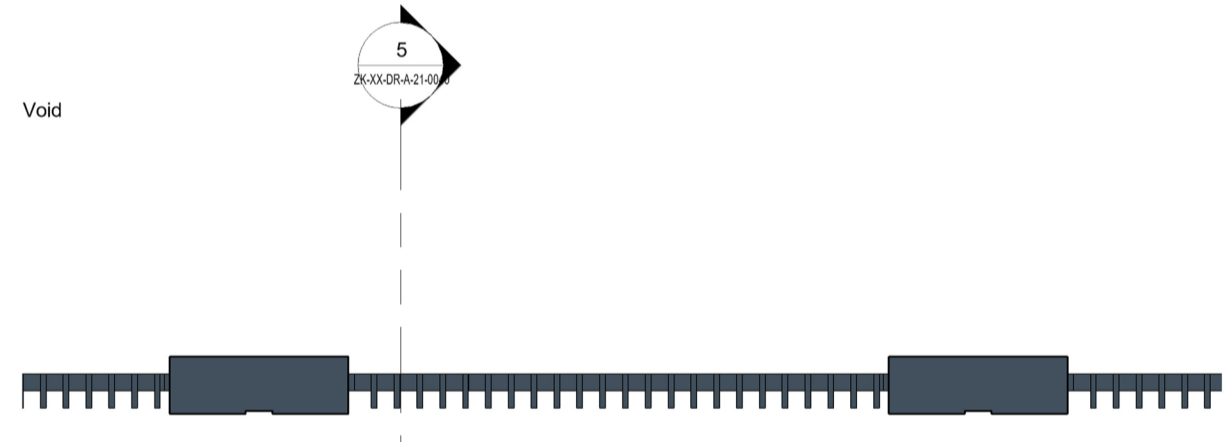


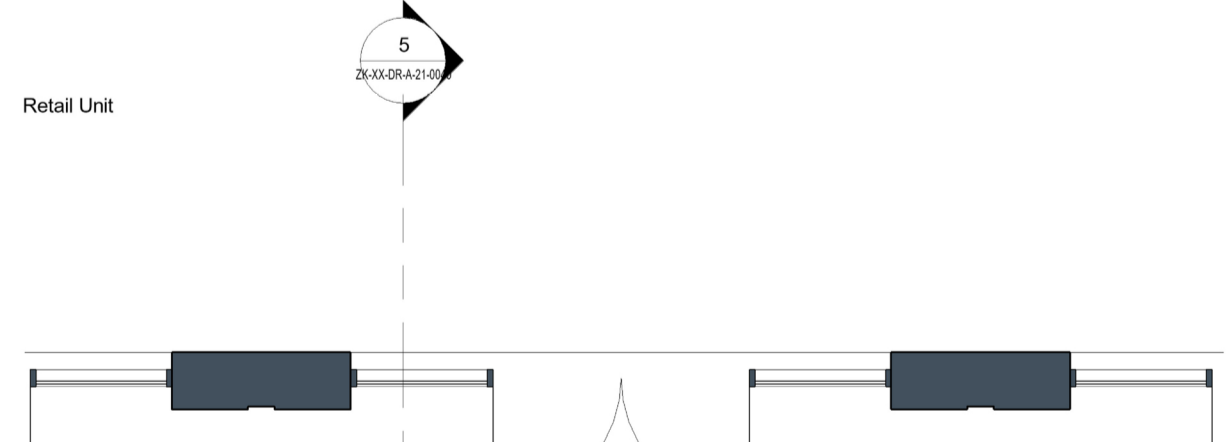
**4 Upper Floor Plan**  
Scale 1 : 50



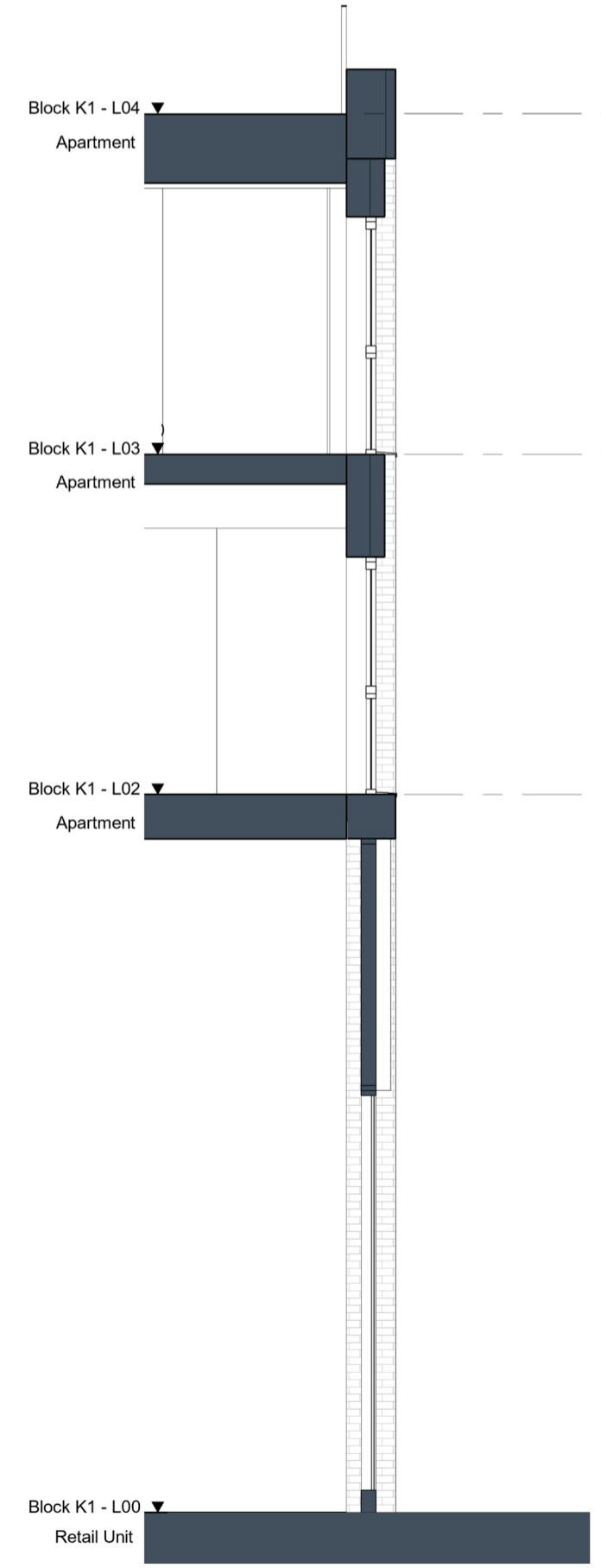
**3 Second Floor Plan**  
Scale 1 : 50



**2 Void Floor Plan**  
Scale 1 : 50



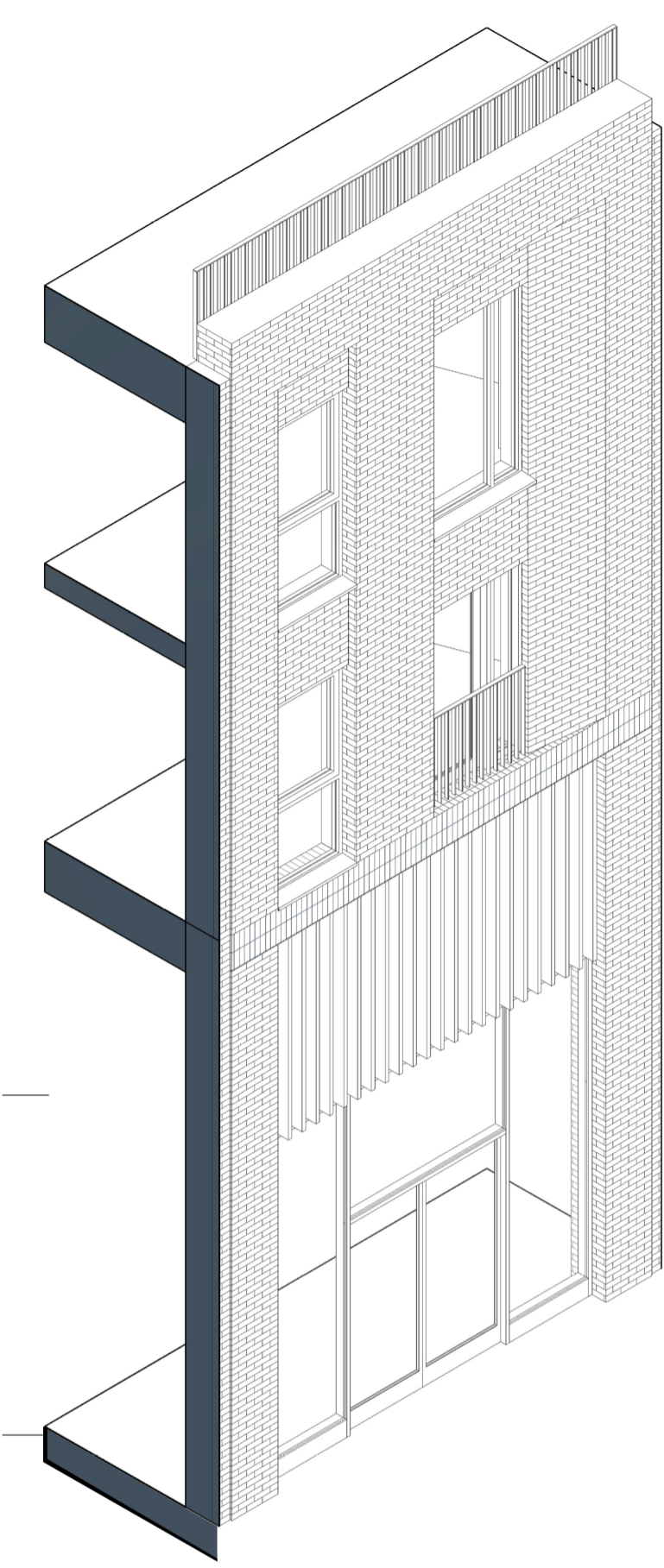
**1 Ground Floor Plan**  
Scale 1 : 50



**5 Typical Section**  
Scale 1 : 50



**6 Typical Elevation**  
Scale 1 : 50



**7 3D Axonometric**  
Scale

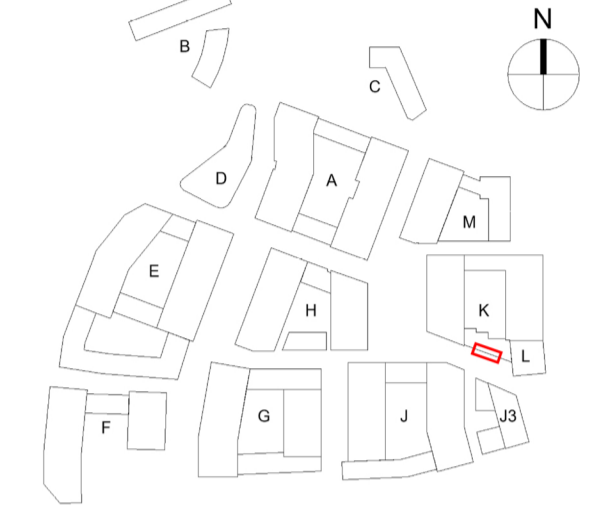
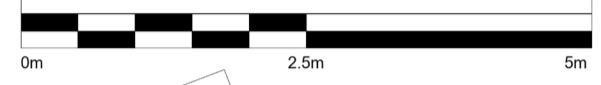
Contractors and consultants are not to scale dimensions from this drawing

Reproduced by permission of Ordnance Survey on behalf of HMSO © CROWN COPYRIGHT and database right 2008. All rights reserved. Ordnance Survey Licence number AL 1000 22432 Broadway Malyan Limited.

The survey information shown on this drawing is based on a topographical survey prepared by a third party and Broadway Malyan Limited accept no responsibility for the accuracy or completeness of the survey.

Drawings to be read in conjunction with the associated Design & Access Statement, associated consultant design team documents & reports and landscape information.

Landscape shown is for illustrative purposes only. For detailed landscape information, please refer to the landscape information & documents.



**Materials Key**

1 Brickwork Finish	
1.1	Red Brick
1.2	Red Brick Soldier Course
1.3	Dark Red Brick
1.4	Dark Red Brick Soldier Course
1.5	White Brick - Light Mortar
1.6	White Brick Soldier Course - Light Mortar
1.7	Grey Brick - Dark Mortar
1.8	Light Grey Brick
1.9	Light Grey Brick Soldier Course
1.10	Black Brick - Matching Mortar
1.11	Dark Grey Brick - Light Mortar
1.12	Dark Grey Brick Soldier Course - Light Mortar
1.13	Dark Grey Brick - Dark Mortar
1.14	Dark Grey Brick Soldier Course - Dark Mortar
1.20	Textured Brickwork
1.21	Inset Brickwork
2 Metal Work / Window Framing Finish	
2.1	Black
2.2	Brown
2.3	White
2.4	Dark Grey
2.5	Dark Brown
2.6	Salmon
2.7	Yellow
2.8	Green
2.9	Blue
2.20	Perforated Metal
2.21	Louvre
3 Roof Finish	
3.1	Brown Roof Tile
3.2	Grey Roof Tile
3.3	Dark Grey Roof Tile

Revision	Date	Drawn By	Description

**BroadwayMalyan<sup>BM</sup>**

4 Pear Place  
London  
SE1 8BT

T: +44 (0)20 7261 4200  
F: +44 (0)20 7261 4300  
E: Lon@BroadwayMalyan.com

www.BroadwayMalyan.com

Client  
**Weston Homes**

Project  
**Anglia Square  
Norwich**

Description  
**Bay Study  
Block K - South  
Botolph Street**

Status  
**For Planning**

Scale 1:50@A1    Drawn By AB    Date 31.03.22

Job Number 35301    Drawing Number ZK-XX-DR-A-21-0040    Revision D0-1

Original size 100mm @ A1 Copyright Broadway Malyan Limited