

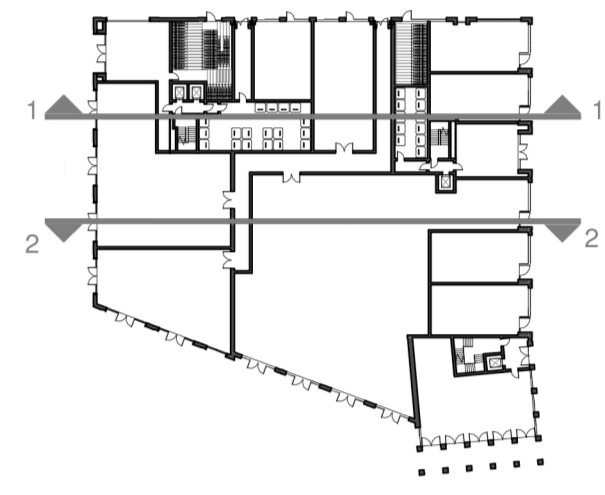
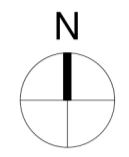
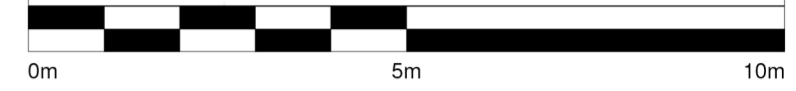
Contractors and consultants are not to scale dimensions from this drawing

Reproduced by permission of Ordnance Survey on behalf of HMSO © CROWN COPYRIGHT and database right 2008 All rights reserved Ordnance Survey Licence number AL 1000 22432 Broadway Malyan Limited

The survey information shown on this drawing is based on a topographical survey prepared by a third party and Broadway Malyan Limited accept no responsibility for the accuracy or completeness of the survey.

Drawings to be read in conjunction with the associated Design & Access Statement, associated consultant design team documents & reports and landscape information

Landscape shown is for illustrative purposes only. For detailed landscape information, please refer to the landscape information & documents.



1 K - 05 - South Elevation Internal

Scale 1 : 100



2 K - 05 - North Elevation Internal

Scale 1 : 100

Materials Key

- 1 Brickwork Finish**
 - 1.1 Red Brick
 - 1.2 Red Brick Soldier Course
 - 1.3 Dark Red Brick
 - 1.4 Dark Red Brick Soldier Course
 - 1.5 White Brick - Light Mortar
 - 1.6 White Brick Soldier Course - Light Mortar
 - 1.7 Grey Brick - Dark Mortar
 - 1.8 Light Grey Brick
 - 1.9 Light Grey Brick Soldier Course
 - 1.10 Black Brick - Matching Mortar
 - 1.11 Dark Grey Brick - Light Mortar
 - 1.12 Dark Grey Brick Soldier Course - Light Mortar
 - 1.13 Dark Grey Brick - Dark Mortar
 - 1.14 Dark Grey Brick Soldier Course - Dark Mortar
 - 1.15 Medium Grey Brick - Light Mortar
 - 1.16 Medium Grey Brick Soldier Course - Light Mortar
- 1.20 Textured Brickwork
- 1.21 Inset Brickwork
- 2 Metal Work / Window Framing Finish**
 - 2.1 Black
 - 2.2 Brown
 - 2.3 Grey
 - 2.4 Dark Grey
 - 2.5 Dark Brown
 - 2.6 Salmon
 - 2.7 Yellow
 - 2.8 Green
 - 2.9 Blue
- 2.20 Perforated Metal
- 2.21 Louvre
- 3 Roof Finish**
 - 3.1 Brown Roof Tile
 - 3.2 Grey Roof Tile
 - 3.3 Dark Grey Roof Tile

| DO-1 | 31.03.22 | Issued For Planning |
|----------|----------|------------------------|
| Revision | Date | Drawn By / Description |
| | | |

BroadwayMalyan^{BM}

4 Pear Place
London
SE1 8BT

T: +44 (0)20 7261 4200
F: +44 (0)20 7261 4300
E: Lon@BroadwayMalyan.com

www.BroadwayMalyan.com

Client
Weston Homes

Project
**Anglia Square
Norwich**

Description
**Elevations
Block KL South & North
Internal**

Status
For Planning

| Scale | Drawn By | Date |
|------------|---------------------|----------|
| 1:100@A1 | JP | 31.03.22 |
| Job Number | Drawing Number | Revision |
| 35301 | ZKL-XX-DR-A-05-0303 | D0-1 |