

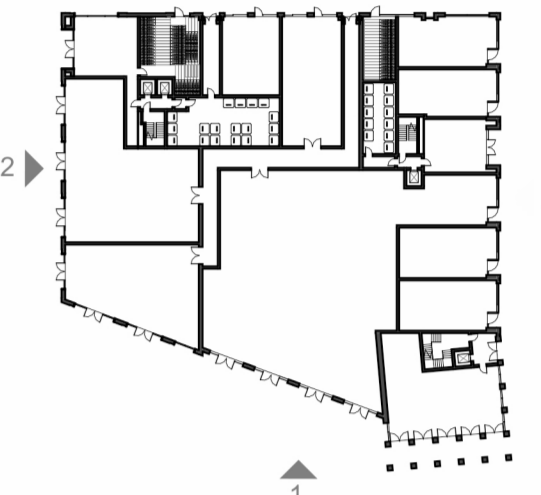
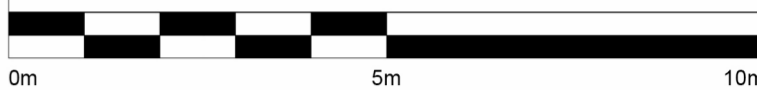
Contractors and consultants are not to scale dimensions from this drawing

Reproduced by permission of Ordnance Survey on behalf of HMSO © CROWN COPYRIGHT and database right 2008 All rights reserved Ordnance Survey Licence number AL 1000 22432 Broadway Malyan Limited

The survey information shown on this drawing is based on a topographical survey prepared by a third party and Broadway Malyan Limited accept no responsibility for the accuracy or completeness of the survey.

Drawings to be read in conjunction with the associated Design & Access Statement, associated consultant design team documents & reports and landscape information

Landscape shown is for illustrative purposes only. For detailed landscape information, please refer to the landscape information & documents.



**Materials Key**

- |          |   |
|----------|---|
| <b>1</b> | <b>Brickwork Finish</b>                         |
| 1.1      | Red Brick                                       |
| 1.2      | Red Brick Soldier Course                        |
| 1.3      | Dark Red Brick                                  |
| 1.4      | Dark Red Brick Soldier Course                   |
| 1.5      | White Brick - Light Mortar                      |
| 1.6      | White Brick Soldier Course - Light Mortar       |
| 1.7      | Grey Brick - Dark Mortar                        |
| 1.8      | Light Grey Brick                                |
| 1.9      | Light Grey Brick Soldier Course                 |
| 1.10     | Black Brick - Matching Mortar                   |
| 1.11     | Dark Grey Brick - Light Mortar                  |
| 1.12     | Dark Grey Brick Soldier Course - Light Mortar   |
| 1.13     | Dark Grey Brick - Dark Mortar                   |
| 1.14     | Dark Grey Brick Soldier Course - Dark Mortar    |
| 1.15     | Medium Grey Brick - Light Mortar                |
| 1.16     | Medium Grey Brick Soldier Course - Light Mortar |
| 1.20     | Textured Brickwork                              |
| 1.21     | Inset Brickwork                                 |
| <b>2</b> | <b>Metal Work / Window Framing Finish</b>       |
| 2.1      | Black   |
| 2.2      | Brown   |
| 2.3      | Grey  |
| 2.4      | Dark Grey                                       |
| 2.5      | Dark Brown                                      |
| 2.6      | Salmon  |
| 2.7      | Yellow  |
| 2.8      | Green   |
| 2.9      | Blue  |
| 2.20     | Perforated Metal                                |
| 2.21     | Louvre  |
| <b>3</b> | <b>Roof Finish</b>                              |
| 3.1      | Brown Roof Tile                                 |
| 3.2      | Grey Roof Tile                                  |
| 3.3      | Dark Grey Roof Tile                             |

Revision	Date	Drawn By	Description
D0-1	31.03.22		Issued For Planning

**BroadwayMalyan<sup>BM</sup>**

4 Pear Place  
London  
SE1 8BT

T: +44 (0)20 7261 4200  
F: +44 (0)20 7261 4300  
E: Lon@BroadwayMalyan.com

www.BroadwayMalyan.com

Client  
**Weston Homes**

Project  
**Anglia Square  
Norwich**

Description  
**Elevations  
Block KL  
South & West**

Status		
<b>For Planning</b>		
Scale	Drawn By	Date
1:100@A1	JP	31.03.22
Job Number	Drawing Number	Revision
35301	ZKL-XX-DR-A-05-0301	D0-1



**1 KL - 05 - South Elevation**  
Scale 1 : 100



**2 K - 05 - West Elevation**  
Scale 1 : 100