

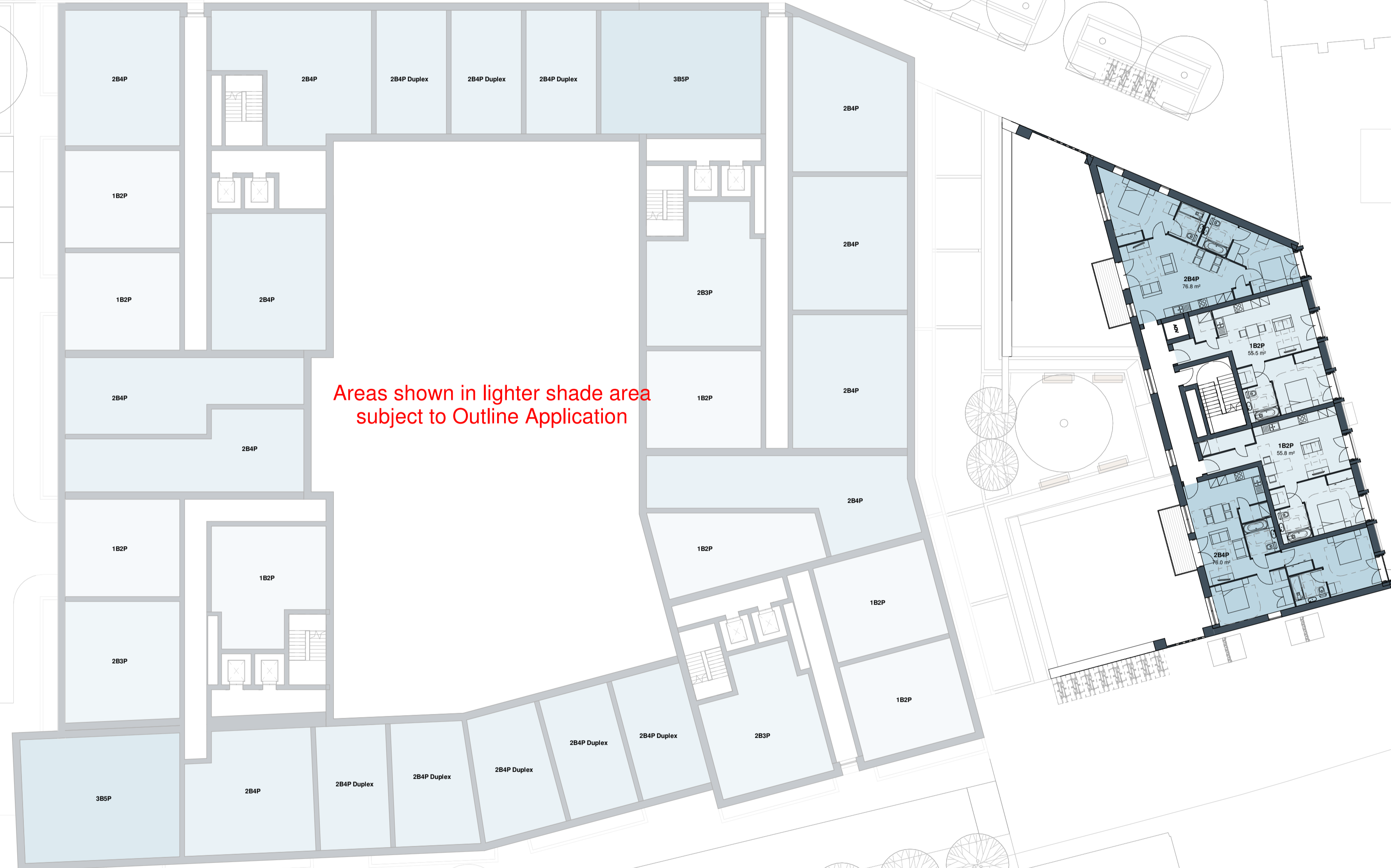
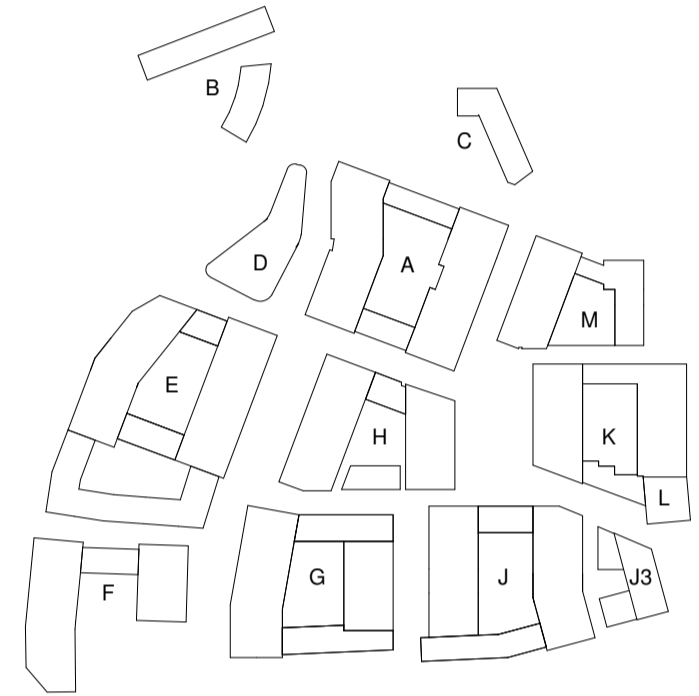
Contractors and consultants are not to scale dimensions from this drawing

Reproduced by permission of Ordnance Survey on behalf of HMSO © CROWN COPYRIGHT and database right 2008 All rights reserved Ordnance Survey Licence number AL 1000 22432 Broadway Malyan Limited

The survey information shown on this drawing is based on a topographical survey prepared by a third party and Broadway Malyan Limited accept no responsibility for the accuracy or completeness of the survey.

Drawings to be read in conjunction with the associated Design & Access Statement, associated consultant design team documents & reports and landscape information

Landscape shown is for illustrative purposes only. For detailed landscape information, please refer to the landscape information & documents.



ST CRISPINS ROAD

Revision	Date	Drawn By	Description
00-1	31.03.22		Issued for Planning

## BroadwayMalyan<sup>BM</sup>

4 Pear Place  
London  
SE1 8BT

T: +44 (0)20 7261 4200  
F: +44 (0)20 7261 4300  
E: Lon@BroadwayMalyan.com

www.BroadwayMalyan.com

Client  
**Weston Homes**

Project  
**Anglia Square  
Norwich**

Description  
**GA Plan  
Block J3  
Level 02**

Status  
**WORK-IN-PROGRESS**

Scale	Drawn By	Date
1:200@A1	BM	08.12.21
Job Number	Drawing Number	Revision
35301	ZJ-02-DR-A-03-0102	D0-1